

微型交流齿轮减速电机型号定义

MICRO AC GEAR MOTOR SERIES PRODUCT MODEL EXPLANATION

电机型号 MOTOR

5 **I** **K** **90** **R** **GN** **S** **F**
 ① ② ③ ④ ⑤ ⑥ ⑦ ⑧

①	电动机的尺寸 Motor Frame Size 0:42mm	2:60mm 3:70mm 4:80mm 5:90mm 6:104mm 7:120mm
②	机型名称 Motor Type	I : 感应电机 Induction Motor R : 可逆电动机 Reversible Motor T : 转矩电动机 Torque Motor
③	系列名称 Series	K : K系列 K Series
④	输出功率 Output Power(W)	90 : 90W
⑤	R表示带调速电机；无：表示定速电机	The Suffix "R" after the Output Power Means Speed Adjustable Motor
⑥	输出轴形状 Motor Shaft Type	GN:常规齿轮轴 Pinion Shaft GU:加强齿轮轴 Pinion Shaft A : 圆轴型/铣扁型
⑦	电源电压极数/转速 Voltage Poles/speed	A : 单相 Single-Phase110V 50/60HZ 4P 1400rpm C : 单相 Single-Phase220V 50/60HZ 4P 1400rpm S : 三相 Three-Phase220V 50/60HZ 4P 1400rpm U : 三相 Three-Phase380V 50/60HZ 4P 1400rpm Y : 三相 Three-Phase220V/380 50/60HZ 4P 1400rpm A : 单相 Single-Phase110V 50/60HZ 2P 2800rpm S : 三相 Three-Phase220V 50/60HZ 2P 2800rpm U : 三相 Three-Phase380V 50/60HZ 2P 2800rpm
⑧	T : 带接线盒 Terminal Box Type F : 带风扇 W/Fan M : 电磁制动刹车 Electromagnetic Brake P : 温控开关 Thermaily	

减速器 GEARHEAD

5 **GN** **60** **K**
 ① ② ③ ④

①	电动机尺寸 Motor Frame Size 0:42mm	2:60mm 3:70mm 4:80mm 5:90mm 6:104mm 7:120mm
②	类型 Gear Type	GN:GN型齿轮箱 GN Type Pinion box GS:带耳朵型减速箱 GS type gear box GU:GU型齿轮箱 GU Type Pinion box GK:四方头型减速箱 GK type gear box
③	减速比 Gear Ratio	(例Example):60 减速比Gear Ratio of 1:60 10X仅限减速器1:10的中间减速比10X denotes the decimal gearhead of ratio 1:10
④	轴承部类 Bearing Type	K : 滚珠轴承 (对GU型方箱体标注为KB) Ball bearing (Mske KB for type GU square case)



电机技术参数 Motor Technical Parameters

	电机型号		功率 Power W	电压 Voltage V	频率 Frequency Hz	电流 Current A	启动转矩 Starting torque mN.m	额定转矩 Rated Torque mN.m	额定转速 Rated Speed r/min	额定时间 Rated Time min	电容 Capacitor μF/VAC
	圆轴电机 motor with round shaft	齿轴电机 motor with gear shaft									
感应电机 Induction motor	2IK6A-A	2IK6GN-A	6	1PH110 (单相)	50	0.22	38	47	1250	连续	2/250
					60	0.20	35	40	1500	连续	
	2IK6A-C	2IK6GN-C	6	1PH220 (单相)	50	0.11	38	47	1250	连续	1.0/450
					60	0.10	35	40	1500	连续	
2IK6A-S	2IK6GN-S	6	3PH220 (三相)	50	0.05	100	47	1250	连续	连续	
				60	0.05	83	40	1500	连续		
2IK6A-U	2IK6GN-U	6	3PH380 (三相)	50	0.03	100	47	1250	连续	连续	
				60	0.03	83	40	1500	连续		
可逆电机 Reversible motor	2RK6A-A	2RK6GN-A	6	1PH110 (单相)	50	0.23	45	47	1250	30	3/250
					60	0.21	40	40	1500	30	
2RK6A-C	2RK6GN-C	6	1PH220 (单相)	50	0.12	45	47	1250	30	1.2/450	
				60	0.21	40	40	1500	30		
刹车电机 brake motor	2IK6A-AM	2IK6GN-AM	6	1PH110 (单相)	50	0.23	75	47	1250	30	3/250
					60	0.21	40	40	1500	30	
	2IK6A-CM	2IK6GN-CM	6	1PH220 (单相)	50	0.12	45	47	1250	30	1.2/450
					60	0.11	40	40	1500	30	
2IK6A-SM	2IK6GN-SM	6	3PH220 (三相)	50	0.05	100	47	1250	连续	连续	
				60	0.05	83	40	1500	连续		
2IK6A-UM	2IK6GN-UM	6	3PH380 (三相)	50	0.03	100	47	1250	连续	连续	
				60	0.03	83	40	1500	连续		

	电机型号		功率 Power W	电压 Voltage V	频率 Frequency Hz	启动转矩 Starting torque mN.m	调速范围 Speed Control Range r/min	额定转矩 Rated Torque mN.m		额定时间 Rated Time min	电容 Capacitor μF/VAC
	圆轴电机 motor with round shaft	齿轴电机 motor with gear shaft						1250r/min	90r/min		
	调速电机 Variable speed	2IK6RA-A						2IK6RGN-A	6		
60			35	90-1600	47	30	连续				
2IK6RA-C		2IK6RGN-C	6	1PH220 (单相)	50	38	90-1400	47	30	连续	1/450
					60	35	90-1600	47	30	连续	

减速机允许负载 Allowable load for the gear motor

减速比 reduction ratio	3	5	7.5	10	12.5	15	18	20	25	30	36	40	50	60	75	90	100	120	150	180	200	250	300
	50Hz	500	300	200	150	120	100	83	75	60	50	41.6	37.5	30	25	20	16.6	16.6	15	10	8.3	7.5	6
60Hz	550	330	220	165	132	110	92	83	66	55	46	42	33	28	22	18	18	16	11	9	8	6.6	5.5
转矩 N.m	0.1	0.16	0.25	0.33	0.41	0.5	0.57	0.6	0.8	0.9	1.1	1.2	1.5	1.9	2.1	2.5	2.5	2.5	2.5	2.5	2.5	2.5	2.5

▲ 注意：使用电压和机型不同，电容量不一样，订货时请务必指明具体的型号。

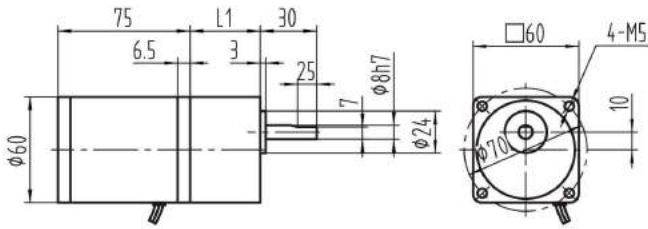
■ 色与马达成反方向，其余则与马达同一方向回转

希望以大于上表的减速比进行减速时，可在电动机与减速机之间安装减速比为1:10的中间减速器

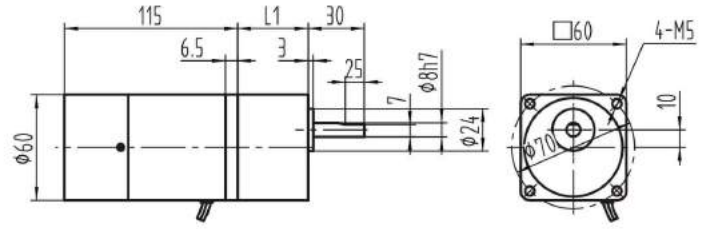


外形尺寸图
OUTLINE DIMENSION SHEET

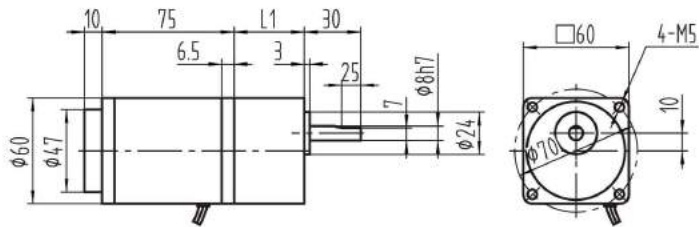
定速电机 Speed Constant Motors
2IK6GN-□+2GN□K



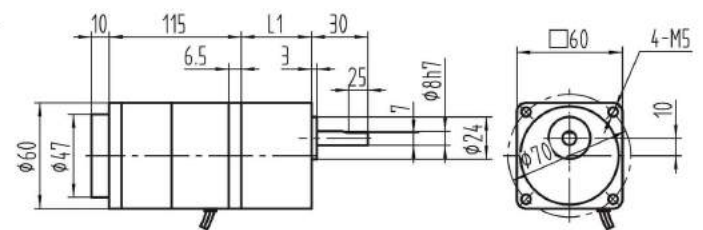
定速电磁制动电机 Brake Motors
2IK6GN-□M+2GN□K



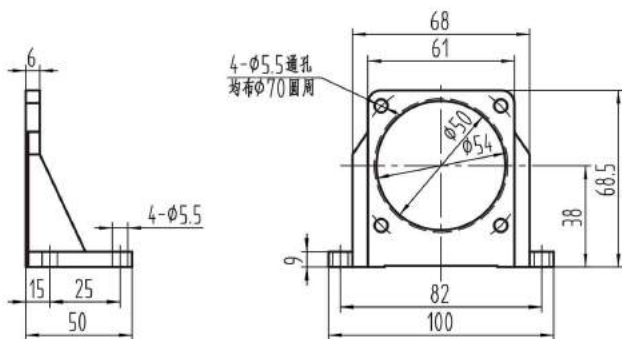
调速电机 Speed Control Motors
2IK6GN-□R+2GN□K



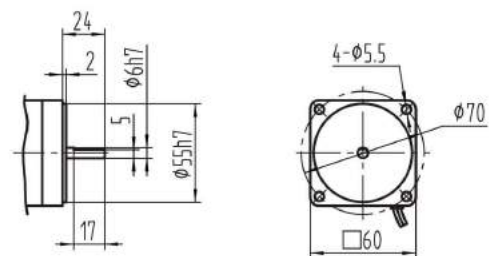
调速电磁制动电机 Speed Control & brake Motors
2IK6GN-□MR+2GN□K



60型脚架



圆轴电机 Motors



减速比 Gear Ratio	L1
3~50	32
15~200	40



کیان صنعت
INDUSTRIES COMPANY



■ 电机技术参数 Motor Technical Parameters

电机型号		功率 Power W	电压 Voltage V	频率 Frequency Hz	电流 Current A	启动转矩 Starting torque mN.m	额定转矩 Rated Torque mN.m	额定转速 Rated Speed r/min	额定时间 Rated Time min	电容 Capacitor μF/VAC
圆轴电机 motor with round shaft	齿轴电机 motor with gear shaft									
感应电机 Induction motor	3IK15A-A	15	1PH110 (单相)	50	0.33	92	115	1250	连续	5/250
				60	0.30	88	96	1500	连续	
	3IK15A-C	15	1PH220 (单相)	50	0.15	92	115	1250	连续	1.2/450
				60	0.13	88	96	1500	连续	
可逆电机 Reversible motor	3IK15A-S	15	3PH220 (三相)	50	0.1	242	120	1250	连续	
				60	0.1	200	96	1500	连续	
	3IK15A-U	15	3PH380 (三相)	50	0.06	242	120	1250	连续	
				60	0.06	200	92	1500	连续	
刹车电机 brake motor	3RK15A-A	15	1PH110 (单相)	50	0.36	110	150	1250	30	6/250
				60	0.34	105	125	1500	30	
	3RK15A-C	15	1PH220 (单相)	50	0.16	110	150	1250	30	1.5/450
				60	0.12	105	125	1500	30	
调速电机 Variable speed	3IK15A-AM	15	1PH110 (单相)	50	0.36	110	150	1250	连续	6/250
				60	0.34	105	125	1500	连续	
	3IK15A-CM	15	1PH220 (单相)	50	0.16	110	150	1250	连续	1.5/450
				60	0.12	105	125	1500	连续	
调速电机 Variable speed	3IK15A-SM	15	3PH220 (三相)	50	0.11	242	120	1250	连续	
				60	0.11	200	96	1500	连续	
	3IK15A-UM	15	3PH380 (三相)	50	0.07	242	120	1250	连续	
				60	0.07	200	96	1500	连续	

电机型号		功率 Power W	电压 Voltage V	频率 Frequency Hz	启动转矩 Starting torque mN.m	调速范围 Speed Control Range r/min	额定转矩 Rated Torque mN.m		额定时间 Rated Time min	电容 Capacitor μF/VAC
圆轴电机 motor with round shaft	齿轴电机 motor with gear shaft						1250r/min	90r/min		
调速电机 Variable speed	3IK15RA-A	15	1PH110 (单相)	50	92	90-1400	115	40	连续	5/250
				60	88	90-1600	115	40		
	3IK15RA-C	15	1PH220 (单相)	50	92	90-1400	115	40	连续	1.2/450
				60	88	90-1600	115	40		

■ 减速机允许负载 Allowable load for the gear motor

减速比 reduction ratio		3	5	7.5	10	12.5	15	18	20	25	30	36	40	50	60	75	90	100	120	150	180	200	250	300
50Hz	转速 r/min	500	300	200	150	120	100	83	75	60	50	41.6	37.5	30	25	20	16.6	15	12.5	10	8.3	7.5	6	5
	转矩 N.m	0.24	0.4	0.7	0.9	1.1	1.4	1.6	1.9	2.2	2.7	3.3	3.7	4.5	5.5	5.5	5.5	5.5	5.5	5.5	5.5	5.5	5.5	5.5
60Hz	转速 r/min	550	330	220	165	132	110	92	83	66	55	46	42	33	28	22	18	16	14	11	9	8	6.6	5.5
	转矩 N.m	0.24	0.3	0.6	0.8	0.9	1.2	1.3	1.6	1.9	2.3	2.9	3.3	3.9	4.9	5.5	5.5	5.5	5.5	5.5	5.5	5.5	5.5	5.5

▲ 注意：使用电压和机型不同，电容容量不一样，订货时请务必指明具体的型号。

■ 色与马达成反方向，其余则与马达同一方向回转

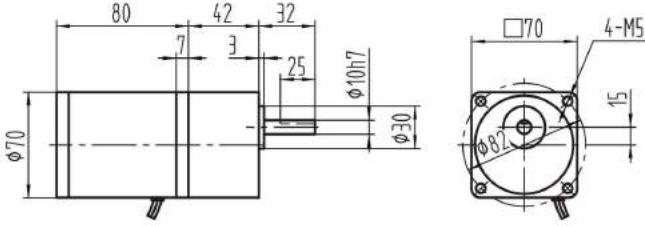
希望以大于上表的减速比进行减速时，可在电动机与减速机之间安装减速比为1:10的中间减速器



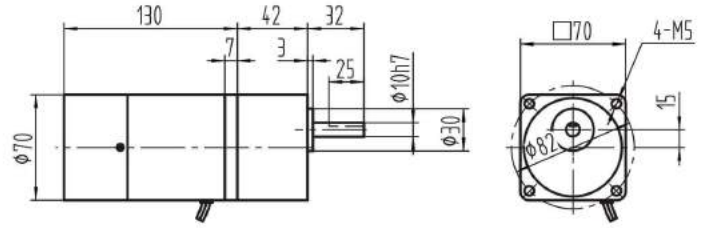
کیان صنعت
INDUSTRIES COMPANY

外形尺寸图
OUTLINE DIMENSION SHEET

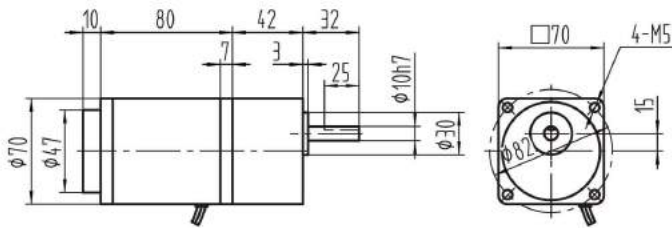
定速电机 Speed Constant Motors
3IK15GN-□+3GN□K



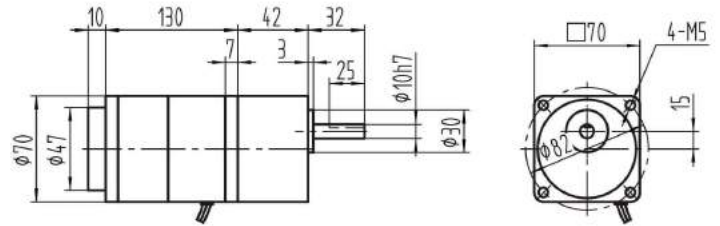
定速电磁制动电机 Brake Motors
3IK15GN-□M+3GN□K



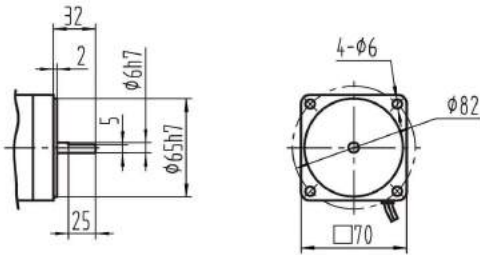
调速电机 Speed Control Motors
3IK15GN-□R+3GN□K



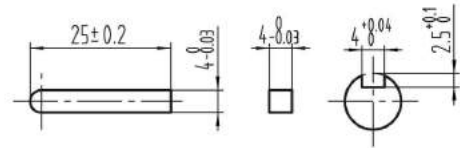
调速电磁制动电机 Speed Control & brake Motors
3IK15GN-□MR+3GN□K



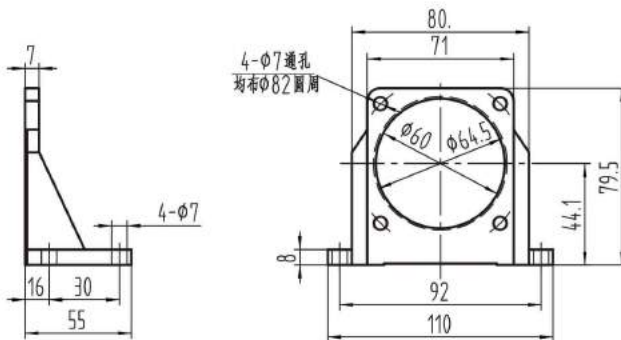
圆轴电机 Motors



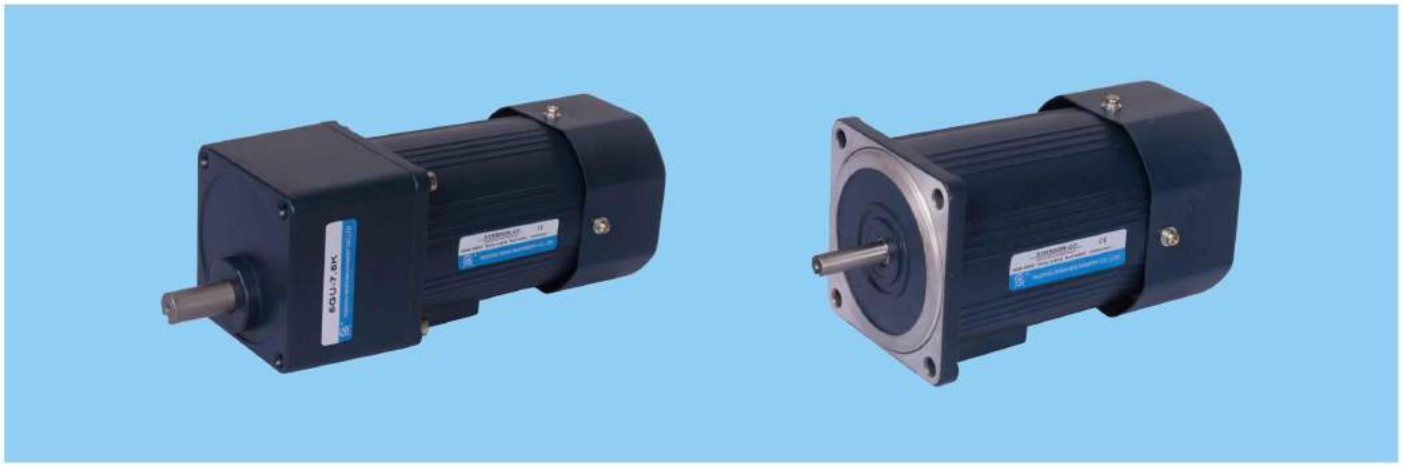
键 Key



70型脚架



کیان صنعت
INDUSTRIES COMPANY



电机技术参数 Motor Technical Parameters

	电机型号		功率 Power W	电压 Voltage V	频率 Frequency Hz	电流 Current A	启动转矩 Starting torque mN.m	额定转矩 Rated Torque mN.m	额定转速 Rated Speed r/min	额定时间 Rated Time min	电容 Capacitor μF/VAC
	圆轴电机 motor with round shaft	齿轴电机 motor with gear shaft									
感应电机 Induction motor	4IK25A-A	4IK25GN-A	25	1PH110 (单相)	50	0.48	150	190	1250	连续	6/250
					60	0.44	125	160	1500	连续	
	4IK25A-C	4IK25GN-C	25	1PH220 (单相)	50	0.22	150	190	1250	连续	1.5/450
					60	0.20	125	160	1500	连续	
可逆电机 Reversible motor	4IK25A-S	4IK25GN-S	25	3PH220 (三相)	50	0.18	425	190	1250	连续	
					60	0.16	380	160	1500	连续	
	4IK25A-U	4IK25GN-U	25	3PH380 (三相)	50	0.14	425	190	1250	连续	
					60	0.12	380	160	1500	连续	
刹车电机 brake motor	4RK25A-A	4RK25GN-A	25	1PH110 (单相)	50	0.50	170	190	1250	30	8/250
					60	0.47	145	160	1500	30	
	4RK25A-C	4RK25GN-C	25	1PH220 (单相)	50	0.24	170	190	1250	30	2.0/450
					60	0.22	145	160	1500	30	
刹车电机 brake motor	4IK25A-AM	4IK25GN-AM	25	1PH110 (单相)	50	0.50	170	190	1250	30	8/250
					60	0.47	145	160	1500	30	
	4IK25A-CM	4IK25GN-CM	25	1PH220 (单相)	50	0.24	170	190	1250	30	2.0/450
					60	0.22	145	160	1500	30	
刹车电机 brake motor	4IK25A-SM	4IK25GN-SM	25	3PH220 (三相)	50	0.18	425	190	1250	30	
					60	0.16	380	160	1500	30	
	4IK25A-UM	4IK25GN-UM	25	3PH380 (三相)	50	0.14	425	190	1250	30	
					60	0.12	380	160	1500	30	

	电机型号		功率 Power W	电压 Voltage V	频率 Frequency Hz	启动转矩 Starting torque mN.m	调速范围 Speed Control Range r/min	额定转矩 Rated Torque mN.m		额定时间 Rated Time min	电容 Capacitor μF/VAC
	圆轴电机 motor with round shaft	齿轴电机 motor with gear shaft						1250r/min	90r/min		
调速电机 Variable speed	4IK25RA-A	4IK25RGN-A	25	1PH110 (单相)	50	150	90-1400	190	50	连续	6/250
					60	125	90-1600	190	50	连续	
	4IK25RA-C	4IK25RGN-C	25	1PH220 (单相)	50	150	90-1400	190	50	连续	1.5/450
					60	125	90-1600	190	50	连续	

减速机允许负载 Allowable load for the gear motor

减速比 reduction ratio		3	5	7.5	10	12.5	15	18	20	25	30	36	40	50	60	75	90	100	120	150	180	200	250	300
50Hz	转速 r/min	500	300	200	150	120	100	83	75	60	50	41.6	37.5	30	25	20	16.6	15	12.5	10	8.3	7.5	6	5
	转矩 N.m	0.5	0.8	1.2	1.6	2.0	2.2	2.5	3.2	4.0	4.7	5.7	6.0	6.0	6.0	6.0	6.0	6.0	6.0	6.0	6.0	6.0	6.0	6.0
60Hz	转速 r/min	550	330	220	165	132	110	92	83	66	55	46	42	33	28	22	18	16	14	11	9	8	6.6	5.5
	转矩 N.m	0.4	0.67	1.0	1.3	1.6	1.8	2.1	2.7	3.2	3.9	4.9	5.2	6.0	6.0	6.0	6.0	6.0	6.0	6.0	6.0	6.0	6.0	6.0

注意：使用电压和机型不同，电容容量不一样，订货时请务必指明具体的型号。

色与马达成反方向，其余则与马达同一方向回转

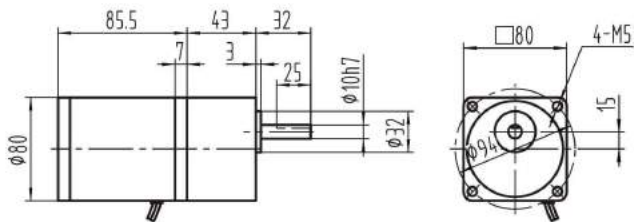
希望以大于上表的减速比进行减速时，可在电动机与减速机之间安装减速比为1:10的中间减速器



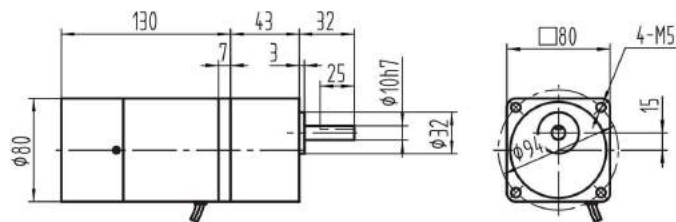
کیان صنعت
INDUSTRIES COMPANY

外形尺寸图
OUTLINE DIMENSION SHEET

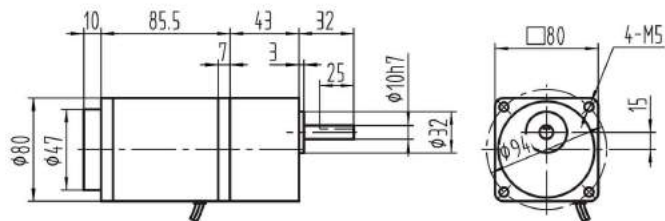
定速电机 Speed Constant Motors
4IK25GN-□+4GN□K



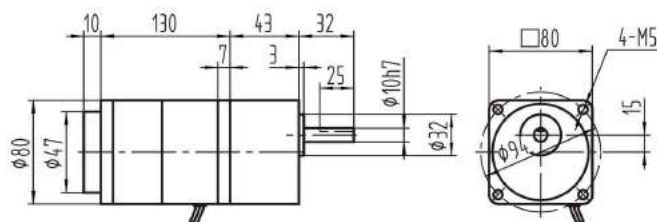
定速电磁制动电机 Brake Motors
4IK25GN-□M+4GN□K



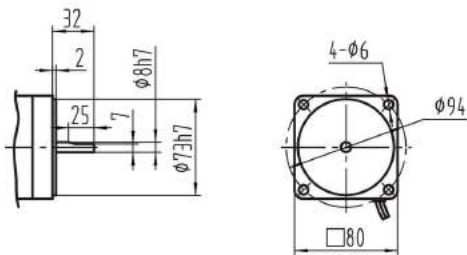
调速电机 Speed Control Motors
4IK25GN-□R+4GN□K



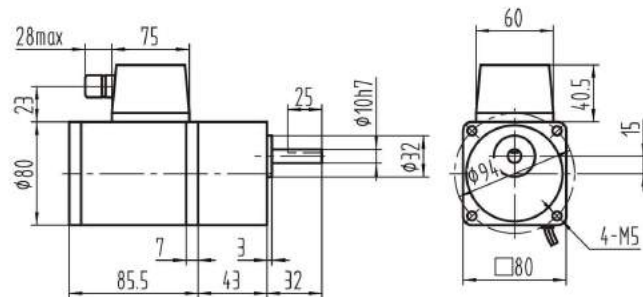
调速电磁制动电机 Speed Control & brake Motors
4IK25GN-□MR+4GN□K



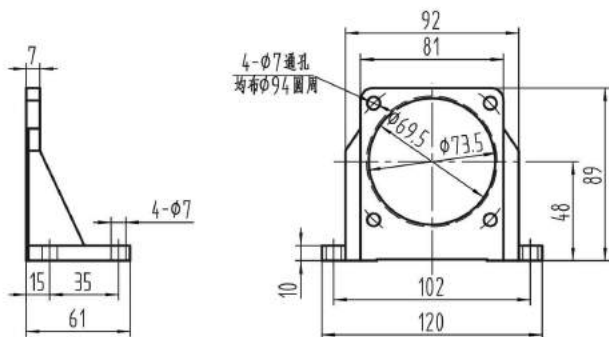
圆轴电机 Motors



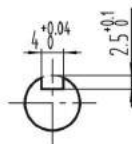
带端子盒电机 Terminal Box Type Motors
4IK25GN-□T+4GN□K



80型脚架



键 Key



کیان صنعت
INDUSTRIES COMPANY



电机技术参数 Motor Technical Parameters

	电机型号		功率 Power W	电压 Voltage V	频率 Frequency Hz	电流 Current A	启动转矩 Starting torque mN.m	额定转矩 Rated Torque mN.m	额定转速 Rated Speed r/min	额定时间 Rated Time min	电容 Capacitor μF/VAC
	圆轴电机 motor with round shaft	齿轴电机 motor with gear shaft									
感应电机 Induction motor	5IK40A-A	5IK40GN-A	40	1PH110 (单相)	50	0.72	235	295	1300	连续	10/250
					60	0.64	180	250	1500	连续	
	5IK40A-C	5IK40GN-C	40	1PH220 (单相)	50	0.43	235	295	1300	连续	2.5/450
					60	0.39	180	250	1500	连续	
5IK40A-S	5IK40GN-S	40	3PH220 (三相)	50	0.38	650	290	1300	连续		
				60	0.35	540	250	1500	连续		
5IK40A-U	5IK40GN-U	40	3PH380 (三相)	50	0.22	650	295	1300	连续		
				60	0.19	300	250	1500	连续		
可逆电机 Reversible motor	5RK40A-A	5RK40GN-A	40	1PH110 (单相)	50	0.79	250	290	1300	30	12/250
					60	0.71	300	250	1500	30	
5RK40A-C	5RK40GN-C	40	1PH220 (单相)	50	0.40	250	295	1300	30	3.0/450	
				60	0.37	145	250	1500	30		
刹车电机 brake motor	5IK40A-AM	5IK40GN-AM	40	1PH110 (单相)	50	0.79	300	295	1300	30	12/250
					60	0.71	250	250	1500	30	
	5IK40A-CM	5IK40GN-CM	40	1PH220 (单相)	50	0.40	300	250	1300	30	3.0/450
					60	0.37	250	295	1500	30	
5IK40GU-SM	5IK40GN-SM	40	3PH220 (三相)	50	0.38	650	290	1300	30		
				60	0.35	540	250	1500	30		
5IK40GU-UM	5IK40GN-UM	40	3PH380 (三相)	50	0.22	650	290	1300	30		
				60	0.19	540	250	1500	30		

	电机型号		功率 Power W	电压 Voltage V	频率 Frequency Hz	启动转矩 Starting torque mN.m	调速范围 Speed Control Range r/min	额定转矩 Rated Torque mN.m		额定时间 Rated Time min	电容 Capacitor μF/VAC
	圆轴电机 motor with round shaft	齿轴电机 motor with gear shaft						1250r/min	90r/min		
	调速电机 Variable speed	5IK40RA-A						5IK40RGU-A	40		
60			180	90-1600	305	60	连续				
5IK40RA-C		5IK40RGU-C	40	1PH220 (单相)	50	235	90-1400	305	60	连续	2.5/450
					60	180	90-1600	305	60	连续	

减速机允许负载 Allowable load for the gear motor

减速比 reduction ratio	3 5 7.5 10 12.5 15 18 20 25 30 36 40 50 60 75 90 100 120 150 180 200 250 300																							
	50Hz	转速 r/min	500	300	200	150	120	100	83	75	60	50	41.6	37.5	30	25	20	16.6	15	12.5	10	8.3	7.5	6
60Hz	转矩 N.m	0.75	1.26	1.87	2.5	3.1	3.8	4.7	5.0	6.2	7.3	7.8	8.2	9.0	9.0	9.0	9.0	9.0	9.0	9.0	9.0	9.0	9.0	9.0
	转速 r/min	550	330	220	165	132	110	92	83	66	55	46	42	33	28	22	18	16	14	11	9	8	6.6	5.5
60Hz	转矩 N.m	0.67	1.1	1.6	2.1	2.8	3.3	4.0	4.2	5.4	6.5	6.8	7.2	8.0	9.0	9.0	9.0	9.0	9.0	9.0	9.0	9.0	9.0	9.0

▲ 注意：使用电压和机型不同，电容容量不一样，订货时请务必指明具体的型号。

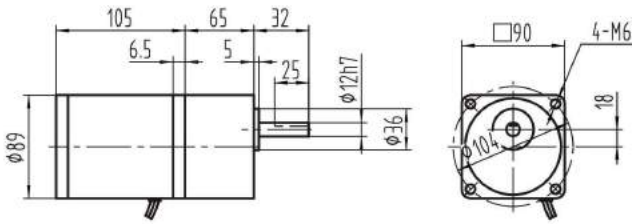
■ 色与马达成反方向，其余则与马达同一方向回转

希望以大于上表的减速比进行减速时，可在电动机与减速机之间安装减速比为1:10的中间减速器

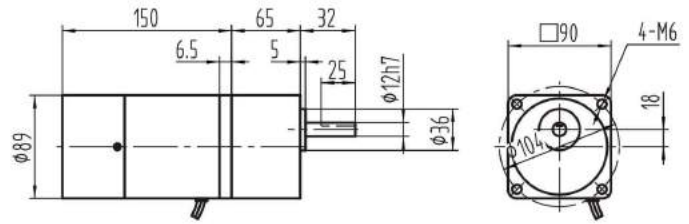


外形尺寸图
OUTLINE DIMENSION SHEET

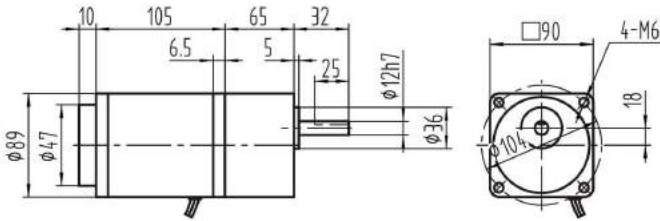
定速电机 Speed Constant Motors
5IK40GN-□+5GN□K



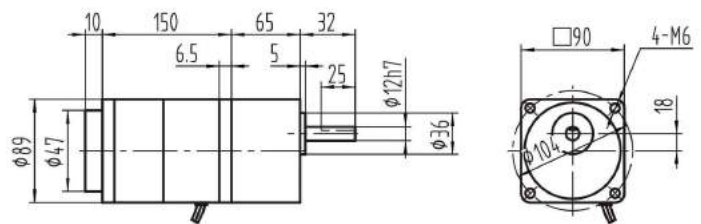
定速电磁制动电机 Brake Motors
5IK40GN-□M+5GN□K



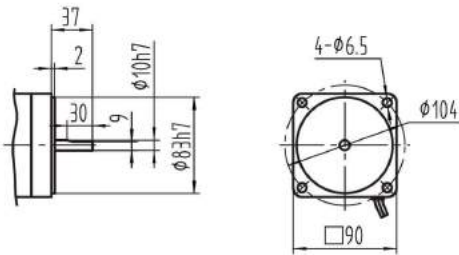
调速电机 Speed Control Motors
5IK40GN-□R+5GN□K



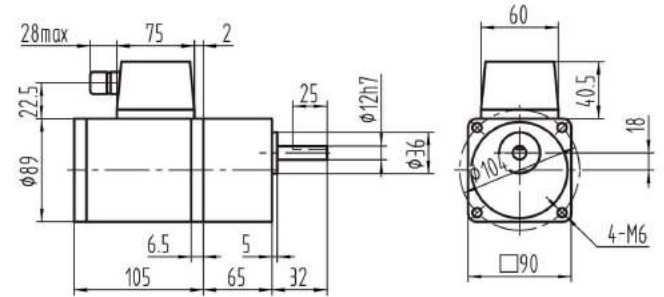
调速电磁制动电机 Speed Control & brake Motors
5IK40GN-□MR+5GN□K



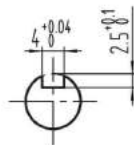
圆轴电机 Motors



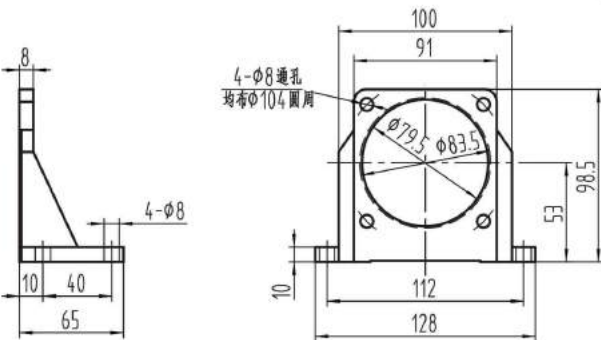
带端子盒电机 Terminal Box Type Motors
5IK40GN-□T+5GN□K



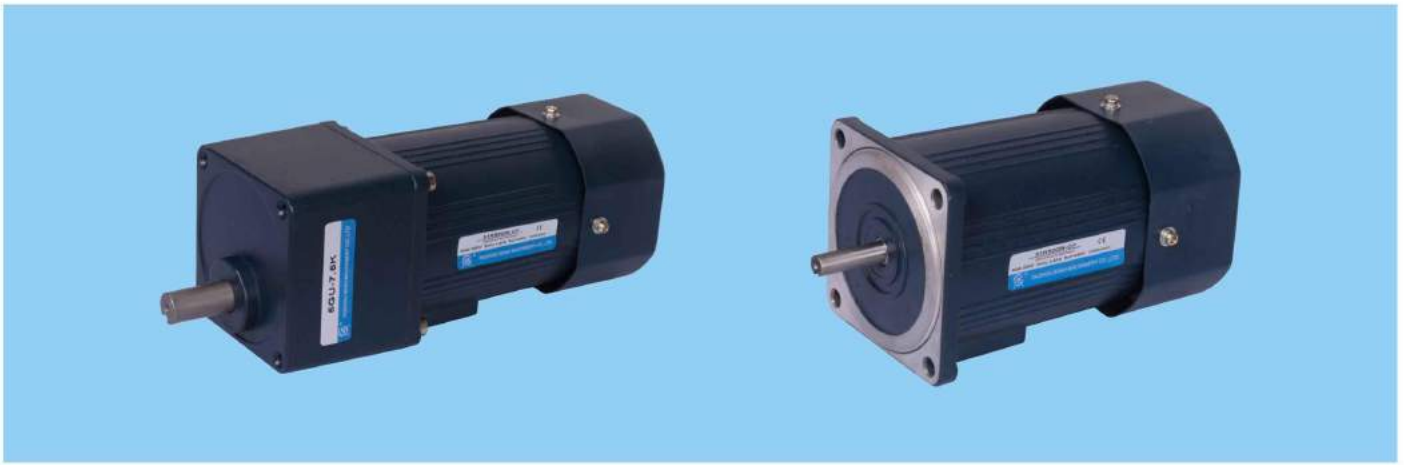
键 Key



90型脚架



کیان صنعت
INDUSTRIES COMPANY



电机技术参数 Motor Technical Parameters

	电机型号		功率 Power W	电压 Voltage V	频率 Frequency Hz	电流 Current A	启动转矩 Starting torque mN.m	额定转矩 Rated Torque mN.m	额定转速 Rated Speed r/min	额定时间 Rated Time min	电容 Capacitor μF/VAC
	圆轴电机 motor with round shaft	齿轴电机 motor with gear shaft									
感应电机 Induction motor	5IK60A-A	5IK60GU-A	60	1PH110 (单相)	50	0.92	400	440	1300	连续	14/250
					60	0.84	335	365	1500	连续	
	5IK60A-C	5IK60GU-C	60	1PH220 (单相)	50	0.48	400	440	1300	连续	4.0/450
					60	0.43	335	365	1500	连续	
5IK60A-S	5IK60GU-S	60	3PH220 (三相)	50	0.50	1100	440	1300	连续	连续	
				60	0.45	920	365	1500	连续		
5IK60A-U	5IK60GU-U	60	3PH380 (三相)	50	0.30	1100	440	1300	连续	连续	
				60	0.27	920	365	1500	连续		
可逆电机 Reversible motor	5RK60A-A	5RK60GU-A	60	1PH110 (单相)	50	1.00	420	460	1300	30	15/250
					60	0.91	350	385	1500	30	
5RK60A-C	5RK60GU-C	60	1PH220 (单相)	50	0.54	420	460	1300	30	4.0/450	
				60	0.49	350	385	1500	30		
刹车电机 brake motor	5IK60A-AM	5IK60GU-AM	60	1PH110 (单相)	50	1.00	420	440	1300	30	15/250
					60	0.91	350	365	1500	30	
	5IK60A-CM	5IK60GU-CM	60	1PH220 (单相)	50	0.54	420	440	1300	30	4.0/450
					60	0.49	350	365	1500	30	
5IK60A-SM	5IK60GU-SM	60	3PH220 (三相)	50	0.50	1100	460	1300	30	连续	
				60	0.45	920	385	1500	30		
5IK60A-UM	5IK60GU-UM	60	3PH380 (三相)	50	0.30	1100	460	1300	30	连续	
				60	0.27	920	385	1500	30		

	电机型号		功率 Power W	电压 Voltage V	频率 Frequency Hz	启动转矩 Starting torque mN.m	调速范围 Speed Control Range r/min	额定转矩 Rated Torque mN.m		额定时间 Rated Time min	电容 Capacitor μF/VAC
	圆轴电机 motor with round shaft	齿轴电机 motor with gear shaft						1250r/min	90r/min		
	调速电机 Variable speed	5IK60RA-A						5IK60RGU-A	60		
60			335	90-1600	460	140					
5IK60RA-C		5IK60RGU-C	60	1PH220 (单相)	50	400	90-1400	460	140	连续	4.0/450
					60	335	90-1600	460	140		

减速机允许负载 Allowable load for the gear motor

减速比 reduction ratio		3	5	7.5	10	12.5	15	18	20	25	30	36	40	50	60	75	90	100	120	150	180	200	250	300
50Hz	转速 r/min	500	300	200	150	120	100	83	75	60	50	41.6	37.5	30	25	20	16.6	15	12.5	10	8.3	7.5	6	5
	转矩 N.m	1.1	1.9	2.8	3.9	4.7	5.8	6.8	7.8	9.2	11.3	13.6	14.6	18.0	18.0	18.0	18.0	18.0	18.0	18.0	18.0	18.0	18.0	18.0
60Hz	转速 r/min	550	330	220	165	132	110	92	83	66	55	46	42	33	28	22	18	16	14	11	9	8	6.6	5.5
	转矩 N.m	1.0	1.6	2.4	3.2	4.0	4.8	5.8	6.4	7.7	9.3	11.6	12.6	15.0	18.0	18.0	18.0	18.0	18.0	18.0	18.0	18.0	18.0	18.0

▲ 注意：使用电压和机型不同，电容容量不一样，订货时请务必指明具体的型号。

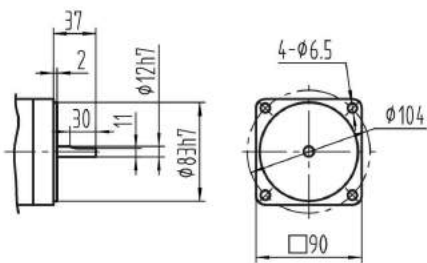
■ 色与马达成反方向，其余则与马达同一方向回转

希望以大于上表的减速比进行减速时，可在电动机与减速机之间安装减速比为1:10的中间减速器

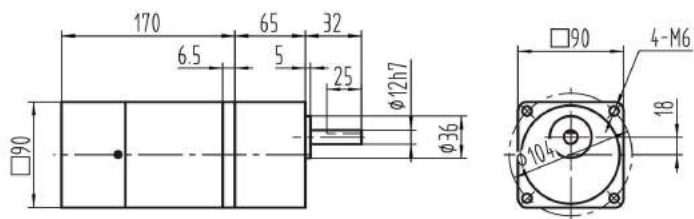


外形尺寸图
OUTLINE DIMENSION SHEET

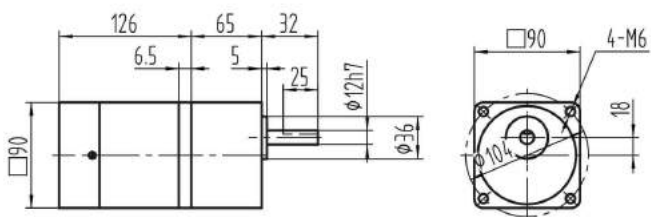
圆轴电机 Motors



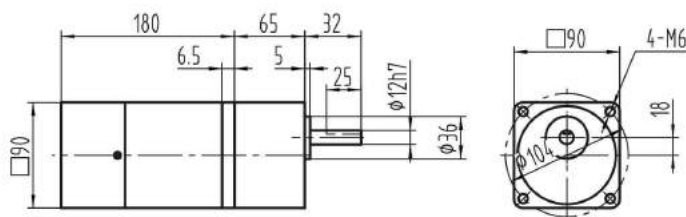
定速电磁制动电机 Brake Motors
5IK60GN-□MF+5GN□KB



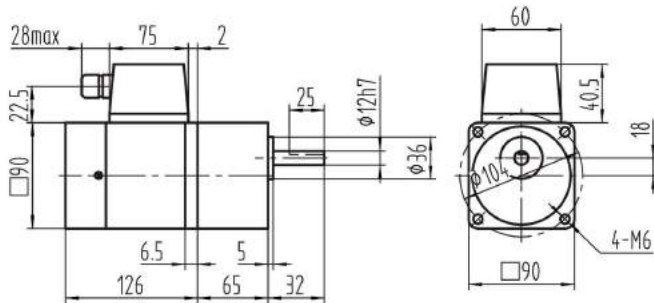
定速(调速)电机 Speed Constant(Control) Motors
5IK60GN-□(R)F+5GN□KB



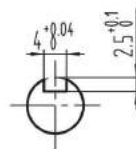
调速电磁制动电机 Speed Control & brake Motors
5IK60GN-□MRF+5GN□KB



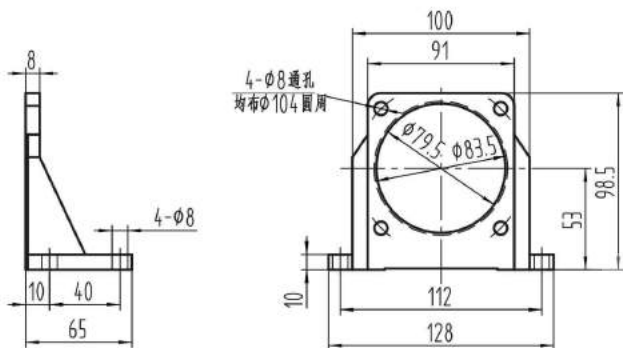
带端子盒电机 Terminal Box Type Motors
5IK60GN-□TF+5GN□KB



键 Key



90型脚架



کیان صنعت
INDUSTRIES COMPANY



电机技术参数 Motor Technical Parameters

	电机型号		功率 Power W	电压 Voltage V	频率 Frequency Hz	电流 Current A	启动转矩 Starting torque mN.m	额定转矩 Rated Torque mN.m	额定转速 Rated Speed r/min	额定时间 Rated Time min	电容 Capacitor μF/VAC
	圆轴电机 motor with round shaft	齿轴电机 motor with gear shaft									
感应电机 Induction motor	5IK90/120A-A	5IK90/120GU-A	90/120	1PH110 (单相)	50	1.70	630	890	1300	连续	24/250
					60	1.53	525	750	1500	连续	
	5IK90/120A-C	5IK90/120GU-C	90/120	1PH220 (单相)	50	0.80	630	890	1300	连续	6.0/450
					60	0.72	525	750	1500	连续	
5IK90/120A-S	5IK90/120GU-S	90/120	3PH220 (三相)	50	0.59	1950	900	1300	连续	6.0/450	
				60	0.53	1625	780	1500	连续		
5IK90/120A-U	5IK90/120GU-U	90/120	3PH380 (三相)	50	0.35	1950	900	1300	连续	6.0/450	
				60	0.32	1625	780	1500	连续		
可逆电机 Reversible motor	5RK90/120A-A	5RK90/120GU-A	90/120	1PH110 (单相)	50	1.81	700	900	1300	30	30/250
					60	1.63	590	780	1500	30	
	5RK90/120A-C	5RK90/120GU-C	90/120	1PH220 (单相)	50	0.95	700	900	1300	30	8.0/450
					60	0.82	590	780	1500	30	
刹车电机 brake motor	5IK90/120A-AM	5IK90/120GU-AM	90/120	1PH110 (单相)	50	1.81	700	900	1300	30	30/250
					60	1.63	590	780	1500	30	
	5IK90/120A-CM	5IK90/120GU-CM	90/120	1PH220 (单相)	50	0.95	700	900	1300	30	8.0/450
					60	0.82	590	780	1500	30	
5IK90/120A-SM	5IK90/120GU-SM	90/120	3PH220 (三相)	50	0.62	1950	900	1300	30	8.0/450	
				60	0.54	1650	780	1500	30		
5IK90/120A-UM	5IK90/120GU-UM	90/120	3PH380 (三相)	50	0.38	1900	900	1300	30	8.0/450	
				60	0.32	1650	780	1500	30		

	电机型号		功率 Power W	电压 Voltage V	频率 Frequency Hz	启动转矩 Starting torque mN.m	调速范围 Speed Control Range r/min	额定转矩 Rated Torque mN.m		额定时间 Rated Time min	电容 Capacitor μF/VAC
	圆轴电机 motor with round shaft	齿轴电机 motor with gear shaft						1250r/min	90r/min		
	调速电机 Variable speed motor	5IK90/120RA-A						5IK90/120RGU-A	90/120		
60			525	90-1600	920	315	连续				
5IK90/120RA-C		5IK90/120RGU-C	90/120	1PH220 (单相)	50	630	90-1400	920	315	连续	6.0/450
					60	525	90-1600	920	315	连续	

减速机允许负载 Allowable load for the gear motor

减速比 reduction ratio		3	5	7.5	10	12.5	15	18	20	25	30	36	40	50	60	75	90	100	120	150	180	200	250	300
50Hz/90W	转速 r/min	500	300	200	150	120	100	83	75	60	50	41.6	37.5	30	25	20	16.6	15	12.5	10	8.3	7.5	6	5
	转矩 N.m	1.7	2.8	4.3	5.6	7.0	8.5	10.0	11.8	13.8	16.5	19.5	22.0	22.0	22.0	22.0	22.0	22.0	22.0	22.0	22.0	22.0	22.0	22.0
60Hz/90W	转速 r/min	550	330	220	165	132	110	92	83	66	55	46	42	33	28	22	18	16	14	11	9	8	6.6	5.5
	转矩 N.m	1.4	2.3	3.5	4.6	5.8	6.90	8.2	9.2	11.0	13.3	16	17.5	18.5	22.0	22.0	22.0	22.0	22.0	22.0	22.0	22.0	22.0	22.0
50Hz/120W	转速 r/min	500	300	200	150	120	100	83	75	60	50	41.6	37.5	30	25	20	16.6	15	12.5	10	8.3	7.5	6	5
	转矩 N.m	1.92	3.8	5.6	7.1	9.2	11.2	14.2	15.0	17.6	20.8	22.0	22.0	22.0	22.0	22.0	22.0	22.0	22.0	22.0	22.0	22.0	22.0	22.0
60Hz/120W	转速 r/min	550	330	220	165	132	110	92	83	66	55	46	42	33	28	22	18	16	14	11	9	8	6.6	5.5
	转矩 N.m	1.87	3.1	4.6	6.1	7.7	9.2	11.5	12.3	14.7	17.7	18.7	20.0	22.0	22.0	22.0	22.0	22.0	22.0	22.0	22.0	22.0	22.0	22.0

▲ 注意：使用电压和机型不同，电容容量不一样，订货时请务必指明具体的型号。

■ 色与马达成反方向，其余则与马达同一方向回转

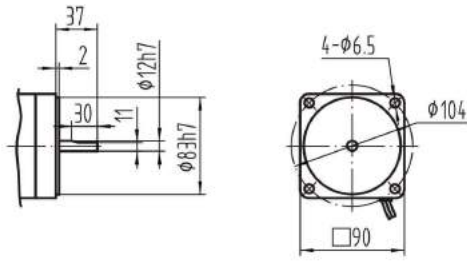
希望以大于上表的减速比进行减速时，可在电动机与减速机之间安装减速比为1:10的中间减速器



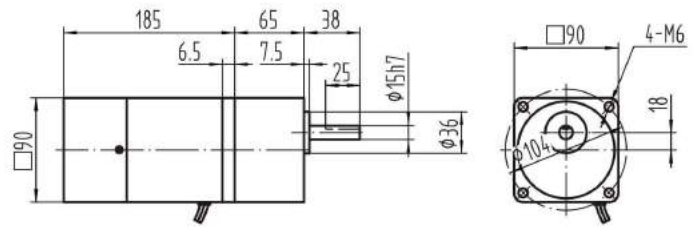
کیان صنعت
INDUSTRIES COMPANY

外形尺寸图
OUTLINE DIMENSION SHEET

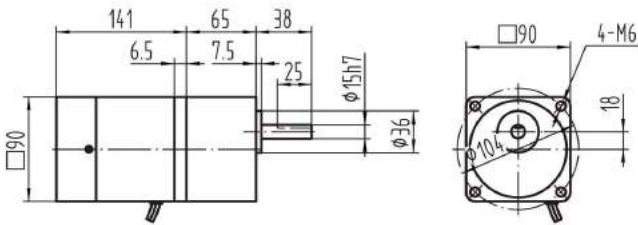
圓轴电机 Motors



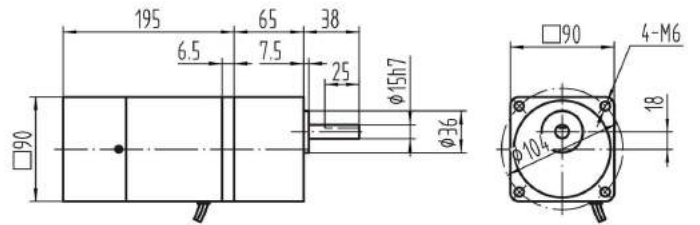
定速电磁制动电机 Brake Motors
5IK90/120GU-□MF+5GU□KB



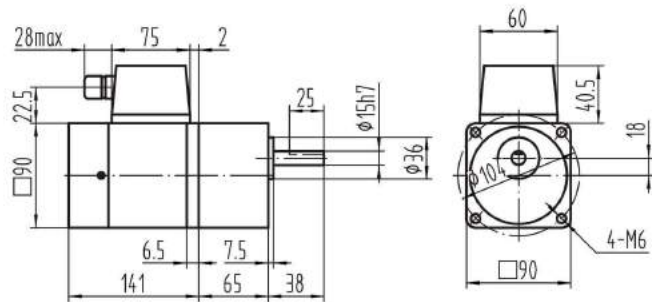
定速(调速)电机 Speed Constant(Control) Motors
5IK90/120GU-□(R)F+5GU□K



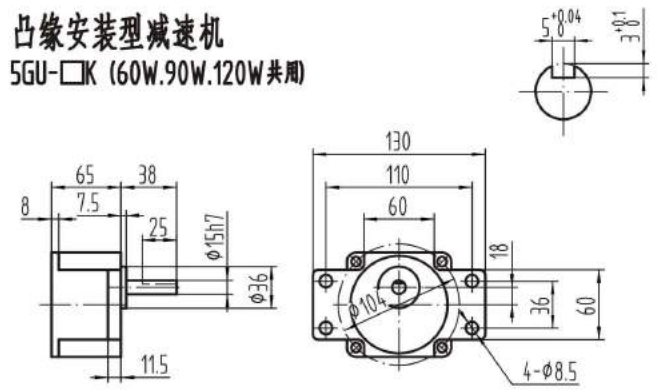
调速电磁制动电机 Speed Control & brake Motors
5IK90/120GU-□MRF+5GU□KB



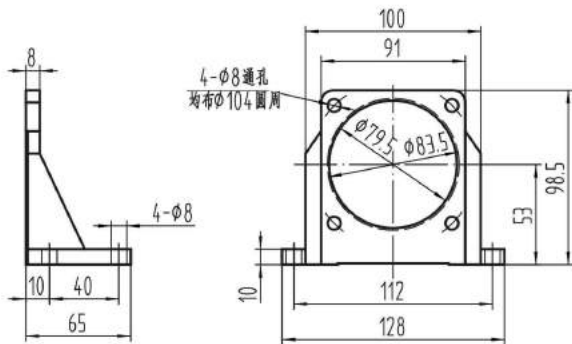
带端子盒电机 Terminal Box Type Motors
5IK90/120GU-□TF+5GU□KB



凸缘安装型减速机
5GU-□K (60W.90W.120W共用)



90型脚架



کیان صنعت
INDUSTRIES COMPANY



电机技术参数 Motor Technical Parameters

	电机型号		功率 Power W	电压 Voltage V	频率 Frequency Hz	电流 Current A	启动转矩 Starting torque mN.m	额定转矩 Rated Torque mN.m	额定转速 Rated Speed r/min	额定时间 Rated Time min	电容 Capacitor μF/VAC
	圆轴电机 motor with round shaft	齿轮电机 motor with gear shaft									
感应电机 Induction motor	5IK140A-A	5IK140GU-A	140	1PH110 (单相)	50	2.0	900	990	1300	连续	32/250
					60	1.77	755	825	1500	连续	
	5IK140A-C	5IK140GU-C	140	1PH220 (单相)	50	1.13	900	990	1300	连续	8.0/450
					60	1.0	755	825	1500	连续	
5IK140A-S	5IK140GU-S	140	3PH220 (三相)	50	0.95	2500	990	1300	连续	连续	
				60	0.84	2100	825	1500	连续		
5IK140A-U	5IK140GU-U	140	3PH380 (三相)	50	0.55	2500	990	1300	连续	连续	
				60	0.48	2100	825	1500	连续		
可逆电机 Reversible motor	5RK140A-A	5RK140GU-A	140	1PH110 (单相)	50	2.05	900	990	1300	30	35/250
					60	1.80	755	825	1500	30	
5RK140A-C	5RK140GU-C	140	1PH220 (单相)	50	1.18	900	990	1300	30	10/450	
				60	0.85	755	825	1500	30		
刹车电机 brake motor	5IK140A-AM	5IK140GU-AM	140	1PH110 (单相)	50	2.05	900	990	1300	30	35/250
					60	1.80	755	825	1500	30	
	5IK140A-CM	5IK140GU-CM	140	1PH220 (单相)	50	1.18	900	990	1300	30	10/450
					60	0.85	755	825	1500	30	
5IK140A-SM	5IK140GU-SM	140	3PH220 (三相)	50	0.98	2500	990	1300	30	30	
				60	0.87	2100	825	1500	30		
5IK120A-UM	5IK120GU-UM	140	3PH380 (三相)	50	0.58	2500	990	1300	30	30	
				60	0.51	2100	825	1500	30		

	电机型号		功率 Power W	电压 Voltage V	频率 Frequency Hz	启动转矩 Starting torque mN.m	调速范围 Speed Control Range r/min	额定转矩 Rated Torque mN.m		额定时间 Rated Time min	电容 Capacitor μF/VAC
	圆轴电机 motor with round shaft	齿轮电机 motor with gear shaft						1250r/min	90r/min		
	调速电机 Variable speed	5IK140RA-A						5IK140RGU-A	140		
60			755	90-1600	980	360					
5IK140RA-C		5IK140RGU-C	140	1PH220 (单相)	50	900	90-1400	980	360	连续	8/450
					60	755	90-1600	980	360		

减速机允许负载 Allowable load for the gear motor

减速比 reduction ratio	3 5 7.5 10 12.5 15 18 20 25 30 36 40 50 60 75 90 100 120 150 180 200 250 300																								
	50Hz	转速 r/min	500	300	200	150	120	100	83	75	60	50	41.6	37.5	30	25	20	16.6	15	12.5	10	8.3	7.5	6	5
60Hz	转矩 N.m	2.6	4.3	6.4	8.5	11.0	13.2	15.5	17.4	20.5	24.6	30.8	33.0	39.5	45.0	45.0	45.0	45.0	45.0	45.0	45.0	45.0	45.0	45.0	45.0
	转速 r/min	550	330	220	165	132	110	92	83	66	55	46	42	33	28	22	18	16	14	11	9	8	6.6	5.5	
60Hz	转矩 N.m	2.2	3.6	5.4	7.1	9.0	10.8	12.5	14.4	17.2	20.6	25.8	27.8	34	45.0	45.0	45.0	45.0	45.0	45.0	45.0	45.0	45.0	45.0	45.0

▲ 注意：使用电压和机型不同，电容容量不一样，订货时请务必指明具体的型号。

■ 色与马达成反方向，其余则与马达同一方向回转

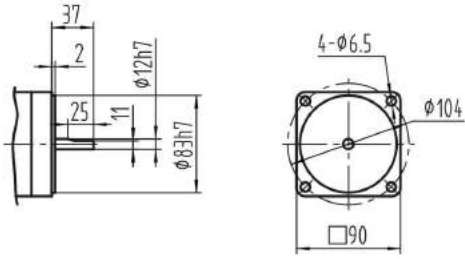
希望以大于上表的减速比进行减速时，可在电动机与减速机之间安装减速比为1:10的中间减速器



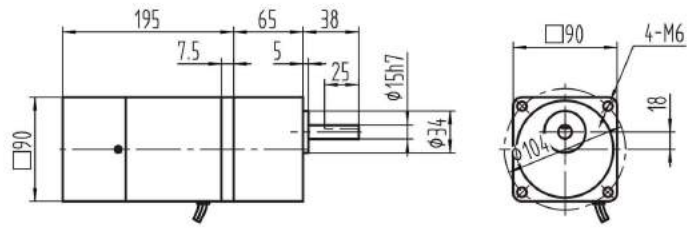
کیان صنعت
INDUSTRIES COMPANY

外形尺寸图
OUTLINE DIMENSION SHEET

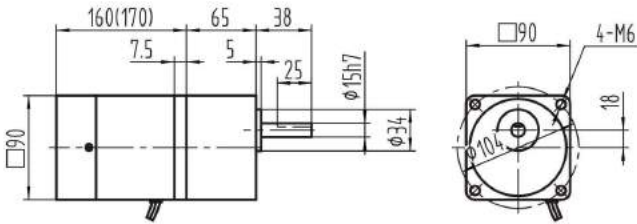
圆轴电机 Motors



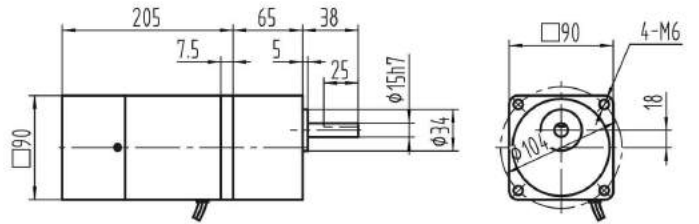
定速电磁制动电机 Brake Motors
5IK140GU-□MF+5GU□KB



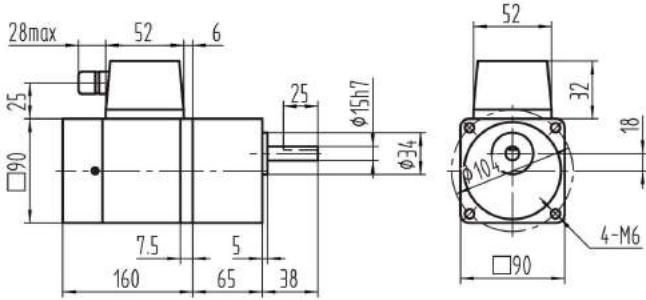
定速(调速)电机 Speed Constant(Control) Motors
5IK140GU-□(R)F+5GU□K



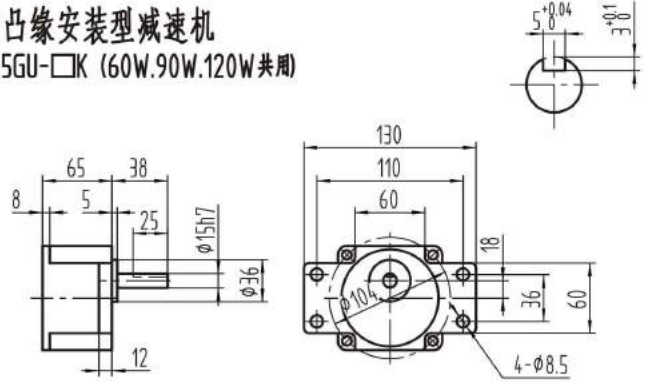
调速电磁制动电机 Speed Control & brake Motors
5IK140GU-□MRF+5GU□KB



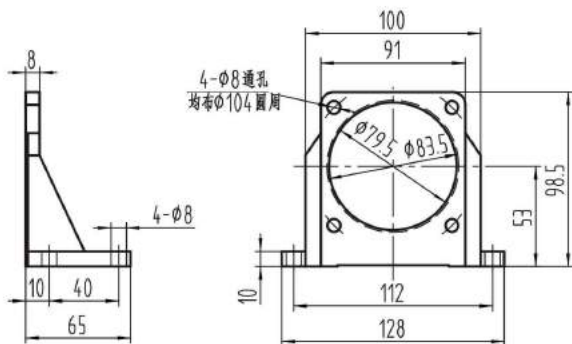
带端子盒电机 Terminal Box Type Motors
5IK140GU-□TF+5GU□KB



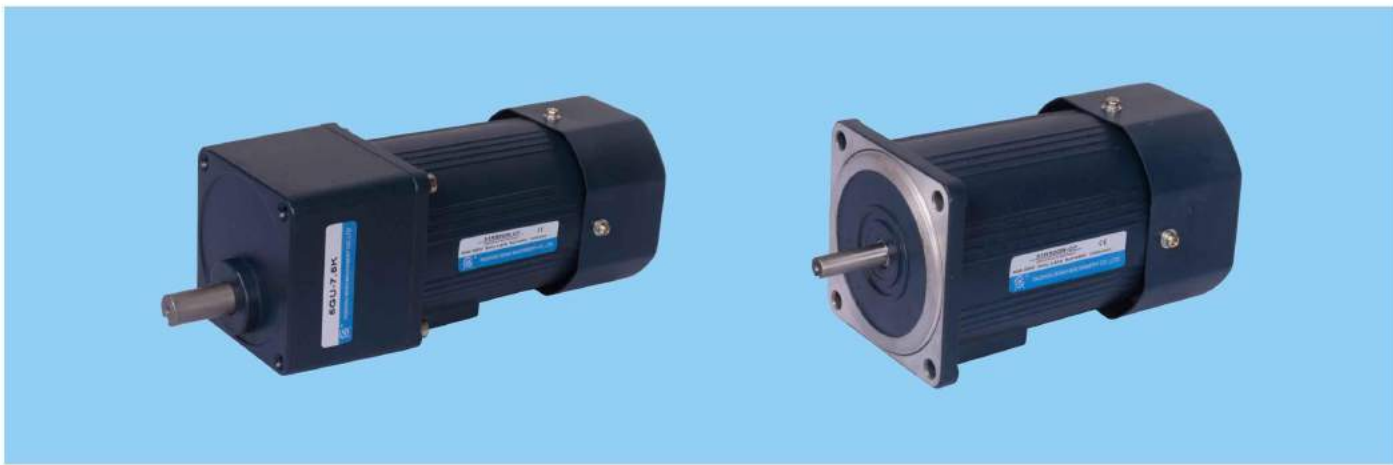
凸缘安装型减速机
5GU-□K (60W.90W.120W共用)



90型脚架



کیان صنعت
INDUSTRIES COMPANY



■ 电机技术参数 Motor Technical Parameters

	电机型号		功率 Power W	电压 Voltage V	频率 Frequency Hz	电流 Current A	启动转矩 Starting torque mN.m	额定转矩 Rated Torque mN.m	额定转速 Rated Speed r/min	额定时间 Rated Time min	电容 Capacitor μ F/VAC
	圆轴电机 motor with round shaft	齿轮电机 motor with gear shaft									
感应电机 Induction motor	6IK180/250A-A	6IK180/250GU-A	180/250	1PH110 (单相)	50	3.05	1.10	1.32	1300	连续 Continuous	40/250
					60	2.72	0.92	1.10	1500		
	6IK180/250A-C	6IK180/250GU-C	180/250	1PH220 (单相)	50	1.40	1.10	1.32	1300	连续 Continuous	10/450
					60	1.21	0.92	1.10	1500		
	6IK180/250A-S	6IK180/250GU-S	180/250	3PH220 (三相)	50	1.08	3.41	1.32	1300	连续 Continuous	
					60	0.92	2.83	1.10	1500		
	6IK180/250A-U	6IK180/250GU-U	180/250	3PH380 (三相)	50	0.61	3.41	1.32	1300	连续 Continuous	
					60	0.51	2.83	1.10	1500		
刹车电机 brake motor	6IK180/250A-AM	6IK180/250GU-AM	180/250	1PH110 (单相)	50	3.15	1.10	1.35	1300	30	48/250
					60	2.82	0.92	1.15	1500		
	6IK180/250A-CM	6IK180/250GU-CM	180/250	1PH220 (单相)	50	1.45	1.10	1.35	1300	30	12/450
					60	1.28	0.92	1.15	1500		
	6IK180/250A-SM	6IK180/250GU-SM	180/250	3PH220 (三相)	50	1.11	3.41	1.35	1300	30	
					60	0.92	2.83	1.15	1500		
	6IK180/250A-UM	6IK180/250GU-UM	180/250	3PH380 (三相)	50	0.65	3.41	1.35	1300	30	
					60	0.59	2.83	1.15	1500		

	电机型号		功率 Power W	电压 Voltage V	频率 Frequency Hz	启动转矩 Starting torque mN.m	调速范围 Speed Control Range r/min	额定转矩 Rated Torque mN.m		额定时间 Rated Time min	电容 Capacitor μ F/VAC
	圆轴电机 motor with round shaft	齿轮电机 motor with gear shaft						1250r/min	90r/min		
	调速电机 Variable speed	6IK180/250RA-A						6IK180/250RGU-A	180/250		
60			0.85	90-1600	1.31	0.45					
6IK180/250RA-C		6IK180/250RGU-C	180/250	1PH220 (单相)	50	1.02	90-1400	1.31	0.45	连续 Continuous	10/450
					60	0.85	90-1600	1.31	0.45		

■ 减速机允许负载 Allowable load for the gear motor

减速比 reduction ratio		3	5	7.5	10	12.5	15	18	20	25	30	36	40	50	60	75	90	100	120	150	180	200	250	300
50Hz/180W	转速 r/min	500	300	200	150	120	100	83	75	60	50	41.6	37.5	30	25	20	16.6	15	12.5	10	8.3	7.5	6	5
	转矩 N.m	3.4	5.6	8.5	11.4	13.8	16.8	20.5	22.5	26.5	30.8	38.5	43.0	50.0	50.0	50.0	50.0	50.0	50.0	50.0	50.0	50.0	50.0	50.0
60Hz/180W	转速 r/min	550	330	220	165	132	110	92	83	66	55	46	42	33	28	22	18	16	14	11	9	8	6.6	5.5
	转矩 N.m	2.8	4.6	7.0	9.3	11.6	13.8	16.5	18.4	22.0	26.6	33.5	36.0	45.0	50.0	50.0	50.0	50.0	50.0	50.0	50.0	50.0	50.0	50.0
50Hz/250W	转速 r/min	500	300	200	150	120	100	83	75	60	50	41.6	37.5	30	25	20	16.6	15	12.5	10	8.3	7.5	6	5
	转矩 N.m	4.3	7.9	11.9	15.9	19.8	23.8	28.7	31.8	39.7	47.7	57.3	63.6	72.0	72.0	72.0	72.0	72.0	72.0	72.0	72.0	72.0	72.0	72.0
60Hz/250W	转速 r/min	550	330	220	165	132	110	92	83	66	55	46	42	33	28	22	18	16	14	11	9	8	6.6	5.5
	转矩 N.m	4.3	7.2	10.8	13.8	17.2	20.3	24.5	26.4	34.2	40.2	50.2	52.8	60.0	72.0	72.0	72.0	72.0	72.0	72.0	72.0	72.0	72.0	72.0

▲ 注意：使用电压和机型不同，电容容量不一样，订货时请务必指明具体的型号。

■ 色与马达成反方向，其余则与马达同一方向回转

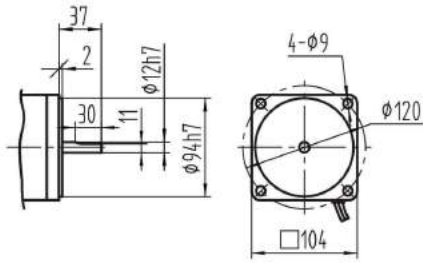
希望以大于上表的减速比进行减速时，可在电动机与减速机之间安装减速比为1:10的中间减速器



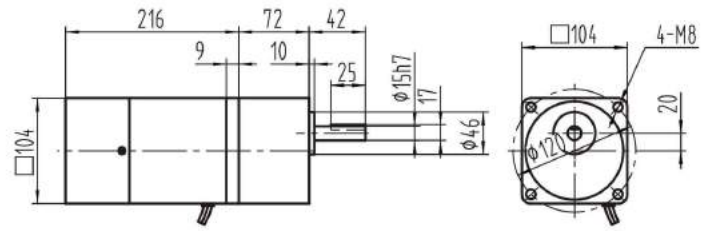
کیان صنعت
INDUSTRIES COMPANY

外形尺寸图
OUTLINE DIMENSION SHEET

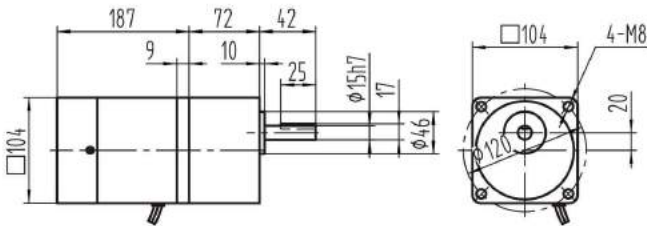
圆轴电机 Motors



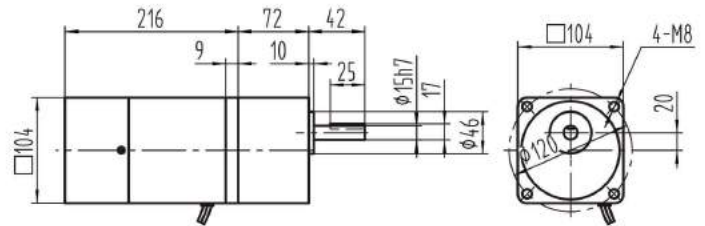
定速电磁制动电机 Brake Motors
6IK180/250GU-□M+6GU□K



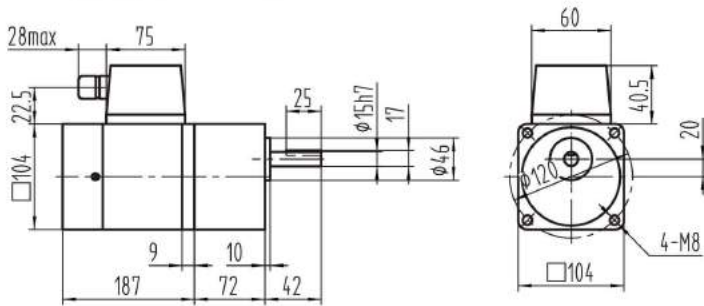
定速(调速)电机 Speed Constant(Control) Motors
6IK180/250GU-□(R)F+6GU□K



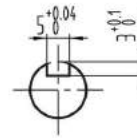
调速电磁制动电机 Speed Control & brake Motors
6IK180/250GU-□MRF+6GU□K



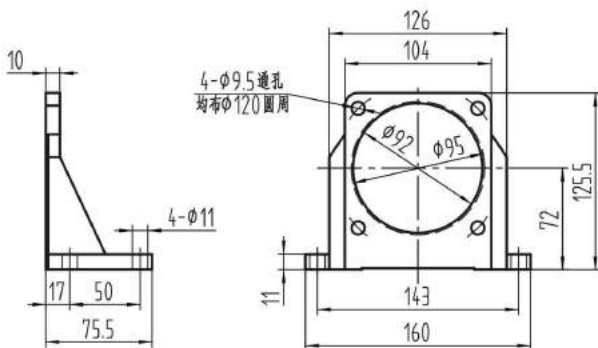
带端子盒电机 Terminal Box Type Motors
6IK180G/250U-□TF+6GU□K



键 Key



104型脚架



کیان صنعت
INDUSTRIES COMPANY



电机技术参数 Motor Technical Parameters

	电机型号		功率 Power W	电压 Voltage V	频率 Frequency Hz	电流 Current A	启动转矩 Starting torque mN.m	额定转矩 Rated Torque mN.m	额定转速 Rated Speed r/min	额定时间 Rated Time min	电容 Capacitor μ F/VAC
	圆轴电机 motor with round shaft	齿轴电机 motor with gear shaft									
感应电机 Induction motor	6IK300A-A	6IK300GU-A	300	1PH110 (单相)	50	3.6	1.21	1.81	1300	连续 Continuous	48/250
					60	3.24	1.01	1.51	1500		
	6IK300A-C	6IK300GU-C	300	1PH220 (单相)	50	1.63	1.21	1.81	1300	连续 Continuous	12/450
					60	1.47	1.01	1.51	1500		
6IK300A-S	6IK300GU-S	300	3PH220 (三相)	50	1.33	3.61	1.81	1300	连续 Continuous		
				60	1.20	3.01	1.51	1500			
6IK300A-U	6IK300GU-U	300	3PH380 (三相)	50	0.78	3.61	1.81	1300	连续 Continuous		
				60	0.70	3.01	1.51	1500			
刹车电机 brake motor	6IK300A-AM	6IK300GU-AM	300	1PH110 (单相)	50	3.75	1.23	1.81	1300	30	50/250
					60	3.37	1.02	1.51	1500		
	6IK300A-CM	6IK300GU-CM	300	1PH220 (单相)	50	1.95	1.23	1.81	1300	30	14/450
					60	1.75	1.02	1.51	1500		
	6IK300A-SM	6IK300GU-SM	300	3PH220 (三相)	50	1.38	3.61	1.81	1300	30	
					60	1.24	3.01	1.51	1500		
	6IK300A-UM	6IK300GU-UM	300	3PH380 (三相)	50	0.81	3.61	1.81	1300	30	
					60	0.73	3.01	1.51	1500		

	电机型号		功率 Power W	电压 Voltage V	频率 Frequency Hz	启动转矩 Starting torque mN.m	调速范围 Speed Control Range r/min	额定转矩 Rated Torque mN.m		额定时间 Rated Time min	电容 Capacitor μ F/VAC
	圆轴电机 motor with round shaft	齿轴电机 motor with gear shaft						1250r/min	90r/min		
调速电机 Variable speed	6IK300RA-A	6IK300RGU-A	300	1PH110 (单相)	50	1.15	90-1400	1.78	0.53	连续 Continuous	48/250
					60	0.96	90-1600	1.78	0.53		
	6IK300RA-C	6IK300RGU-C	300	1PH220 (单相)	50	1.15	90-1400	1.78	0.53	连续 Continuous	12/450
					60	0.96	90-1600	1.78	0.53		

减速机允许负载 Allowable load for the gear motor

减速比 reduction ratio		3	5	7.5	10	12.5	15	18	20	25	30	36	40	50	60	75	90	100	120	150	180	200	250	300
50Hz	转速 r/min	500	300	200	150	120	100	83	75	60	50	41.6	37.5	30	25	20	16.6	15	12.5	10	8.3	7.5	6	5
	转矩 N.m	5.7	9.5	14.3	19.0	23.8	28.6	34.0	38.2	46.7	57.3	68.0	76.0	82.0	82.0	82.0	82.0	82.0	82.0	82.0	82.0	82.0	82.0	82.0
60Hz	转速 r/min	550	330	220	165	132	110	92	83	66	55	46	42	33	28	22	18	16	14	11	9	8	6.6	5.5
	转矩 N.m	5.2	8.5	12.5	16.2	20.3	24.5	30.2	32.2	41.5	49.0	60.6	64.2	68.0	82.0	82.0	82.0	82.0	82.0	82.0	82.0	82.0	82.0	82.0

▲ 注意：使用电压和机型不同，电容容量不一样，订货时请务必指明具体的型号。

■ 色与马达成反方向，其余则与马达同一方向回转

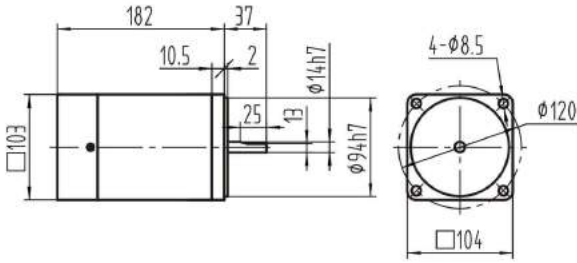
希望以大于上表的减速比进行减速时，可在电动机与减速机之间安装减速比为1:10的中间减速器



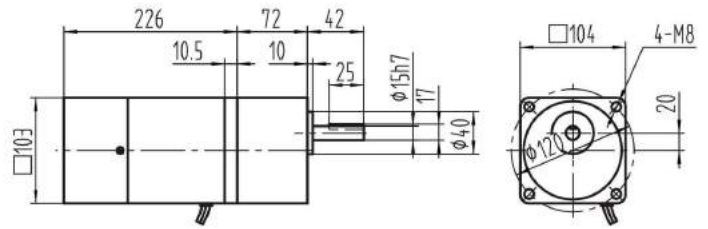
کیان صنعت
INDUSTRIES COMPANY

外形尺寸图
OUTLINE DIMENSION SHEET

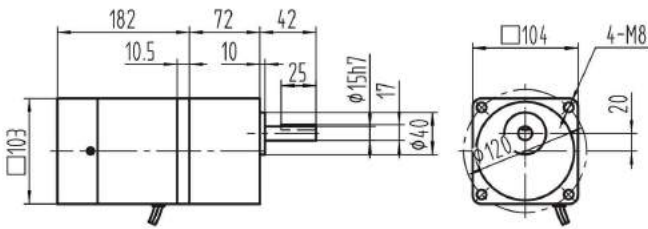
圆轴电机 Motors



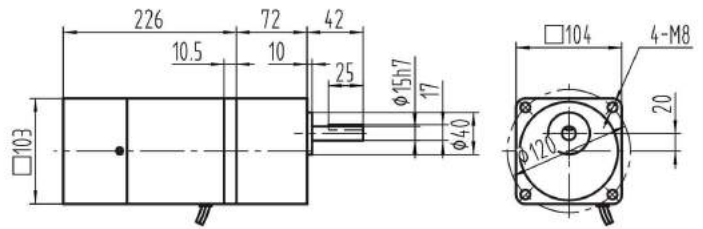
定速电磁制动电机 Brake Motors
6IK300GU-□MF+6GU□K



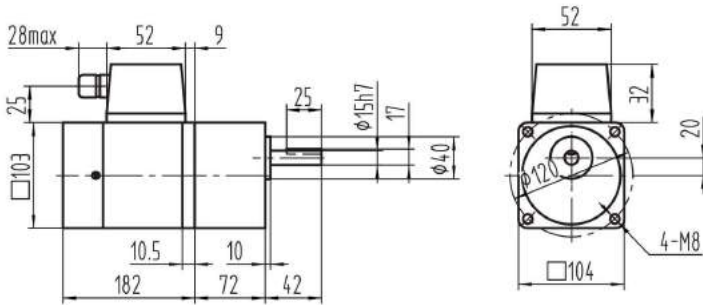
定速(调速)电机 Speed Constant(Control) Motors
6IK300GU-□(R)F+6GU□K



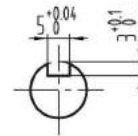
调速电磁制动电机 Speed Control & brake Motors
6IK300GU-□MRF+6GU□K



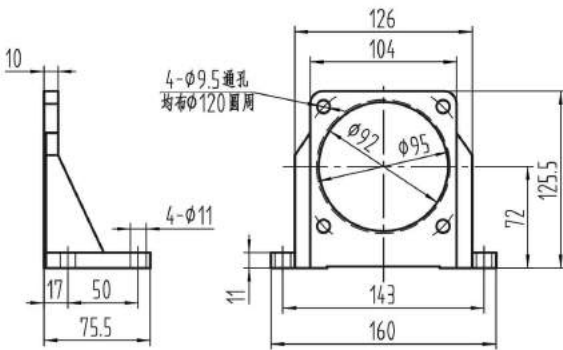
带端子盒电机 Terminal Box Type Motors
6IK300GU-□TF+6GU□K



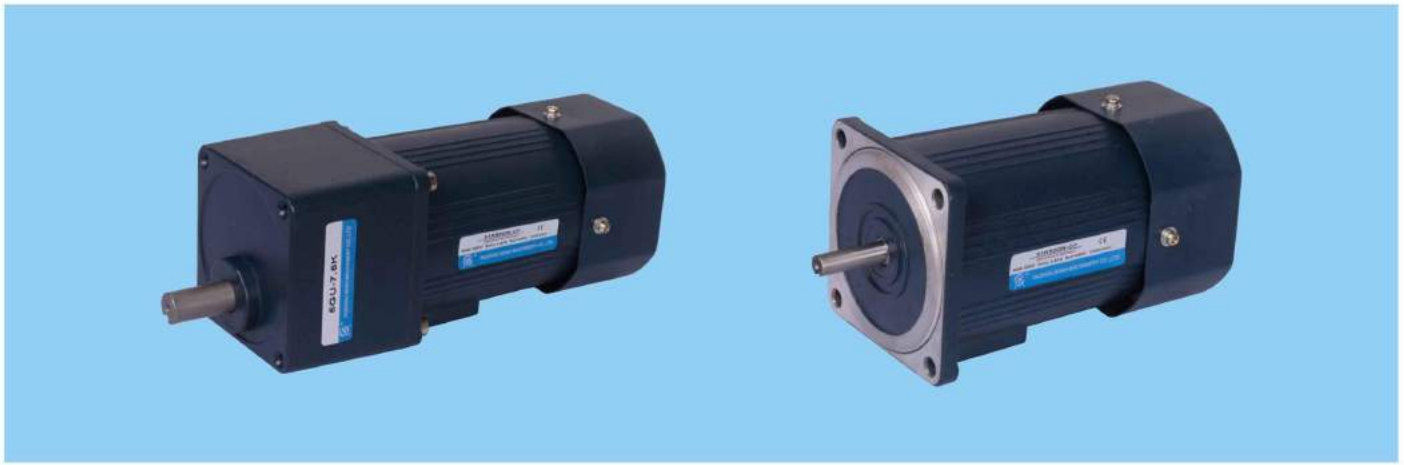
键 Key



104型脚架



کیان صنعت
INDUSTRIES COMPANY



■ 电机技术参数 Motor Technical Parameters

	电机型号		功率 Power W	电压 Voltage V	频率 Frequency Hz	电流 Current A	启动转矩 Starting torque mN.m	额定转矩 Rated Torque mN.m	额定转速 Rated Speed r/min	额定时间 Rated Time min	电容 Capacitor μF/VAC
	圆轴电机 motor with round shaft	齿轴电机 motor with gear shaft									
感应电机 Induction motor	7IK400A-A	7IK400GU-A	400	1PH110 (单相)	50	6.0	2.4	2.7	1300	连续 Continuous	60/250
					60	5.7	2.1	2.3	1500		
	7IK400A-C	7IK400GU-C	400	1PH220 (单相)	50	3.0	2.4	2.7	1300	连续 Continuous	16/450
					60	2.7	2.1	2.3	1500		
	7IK400A-S	7IK400GU-S	400	3PH220 (三相)	50	3.0	7.2	2.7	1300	连续 Continuous	
					60	2.7	6.3	2.3	1500		
	7IK400A-U	7IK400GU-U	400	3PH380 (三相)	50	1.5	7.2	2.7	1300	连续 Continuous	
					60	1.2	6.3	2.3	1500		
刹车电机 brake motor	7IK400A-AM	7IK400GU-AM	400	1PH110 (单相)	50	6.0	2.4	2.7	1300	30	60/250
					60	5.7	2.1	2.3	1500		
	7IK400A-CM	7IK400GU-CM	400	1PH220 (单相)	50	3.0	2.4	2.7	1300	30	18/450
					60	2.7	2.1	2.3	1500		
	7IK400A-SM	7IK400GU-SM	400	3PH220 (三相)	50	3.0	7.2	2.7	1300	30	
					60	2.7	6.3	2.3	1500		
	7IK400A-UM	7IK400GU-UM	400	3PH380 (三相)	50	1.5	7.2	2.7	1300	30	
					60	1.2	6.3	2.3	1500		

	电机型号		功率 Power W	电压 Voltage V	频率 Frequency Hz	启动转矩 Starting torque mN.m	调速范围 Speed Control Range r/min	额定转矩 Rated Torque mN.m		额定时间 Rated Time min	电容 Capacitor μF/VAC
	圆轴电机 motor with round shaft	齿轴电机 motor with gear shaft						1250r/min	90r/min		
	调速电机 Variable speed	7IK400RA-A						7IK400RGU-A	400		
60			1.86	90-1600	2.68	0.58					
7IK400RA-C		7IK400RGU-C	400	1PH220 (单相)	50	2.05	90-1400	2.68	0.58	连续 Continuous	12/450
					60	1.86	90-1600	2.68	0.58		

■ 减速机允许负载 Allowable load for the gear motor

减速比 reduction ratio		3	5	7.5	10	12.5	15	18	20	25	30	36	40	50	60	75	90	100	120	150	180	200	250	300
50Hz	转速 r/min	500	300	200	150	120	100	83	75	60	50	41.6	37.5	30	25	20	16.6	15	12.5	10	8.3	7.5	6	5
	转矩 N.m	7.6	12.6	19.1	25.4	31.6	38.0	47.8	53.2	67.6	76.4	95.5	101.8	110.0	110.0	110.0	110.0	110.0	110.0	110.0	110.0	110.0	110.0	110.0
60Hz	转速 r/min	550	330	220	165	132	110	92	83	66	55	46	42	33	28	22	18	16	14	11	9	8	6.6	5.5
	转矩 N.m	6.8	11.4	17.2	23.0	27.8	32.6	38.5	43.2	54.9	65.5	80.0	90.0	98.8	110.0	110.0	110.0	110.0	110.0	110.0	110.0	110.0	110.0	110.0

▲ 注意：使用电压和机型不同，电容容量不一样，订货时请务必指明具体的型号。

■ 色与马达成反方向，其余则与马达同一方向回转

希望以大于上表的减速比进行减速时，可在电动机与减速机之间安装减速比为1:10的中间减速器

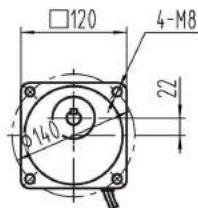
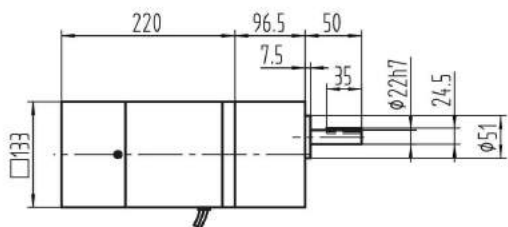


外形尺寸图

OUTLINE DIMENSION SHEET

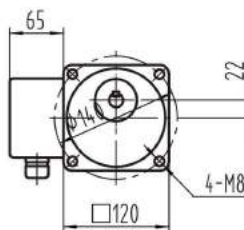
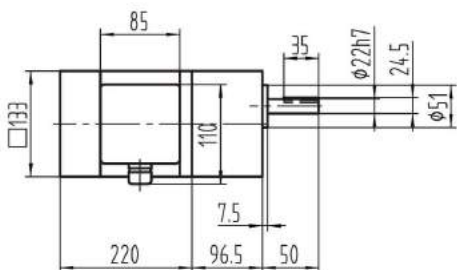
定速(调速)电磁制动电机

71K400GU-□M(R)F+7GU□K

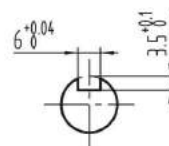


带端子盒电机 Terminal Box Type Motors

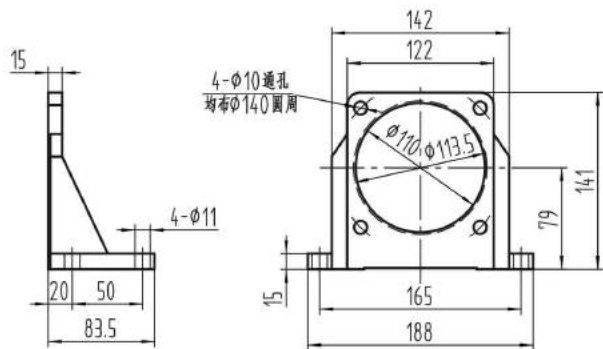
71K400GU-□TF+7GU□K



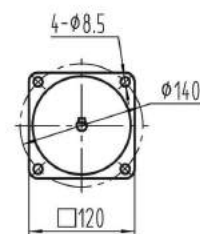
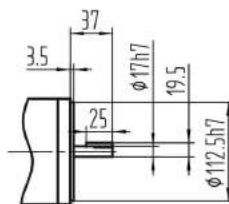
键 Key



120型脚架



圆轴电机 Motors



کیان صنعت
INDUSTRIES COMPANY

● G3系列减速机 G3 Series model reducer

G3 F M - 22 - 20 - T0.4

①
②
③
④
⑤
⑥

No	说 明	Comments
1	型号代码	Model code
2	安装方式 1). F : 法兰安装 2). L : 底脚安装	Mount mode 1). F : Flange mounted 2). L : Foot-mounted
3	动力方式 1). M : 标准型(电机不带制动器) 2). B : 制动型(电机带制动器) 3). S : IEC输入 4). 无字符表示轴输入	Power mode 1). M : Standard model (motor without brake) 2). B : Brake model(motor with brake) 3). S : IEC input 4). Without character means shaft input
4	输出轴直径 (Ø18; Ø22; Ø28; Ø32; Ø40; Ø50)	Output shaft diameter (Ø18; Ø22; Ø28; Ø32; Ø40; Ø50)
5	减速器速比 (i = 5; 10; 15; 20; 25; 30; 40; 50; 60; 80; 100; 120; 160; 200)	Speed ratio of reducer (i = 5; 10; 15; 20; 25; 30; 40; 50; 60; 80; 100; 120; 160; 200)
6	电机功率 (0.1; 0.20; 0.40; 0.75; 1.5; 2.2KW) 1). T : 三相电机 2). 不带 T 表示单相电机 3). (...): IEC 电机功率	Motor power (0.1; 0.20; 0.40; 0.75; 1.5; 2.2KW) 1). T : Three phase motor 2). Without T means single phase motor 3). (...) IEC Motor power

● 无级变速器配G3输入型减速器

Combination of speed variator and G3 input reducer

UDL - 075 - G3 F S - 28 - 40

①
②
③
④
⑤
⑥
⑦

No	说 明	Comments
1	铝合金机壳无级变速器代号	Code of aluminium alloy casing speed variator
2	电机功率	Motor power (0.18; 0.37; 0.75KW)
3	型号代码	Model code
4	安装方式 1). F : 法兰安装 2). L : 底脚安装	Mount mode 1). F : Flange mounted 2). L : Foot-mounted
5	S : 表示IEC输入	S : Means IEC input
6	输出轴直径 (Ø18; Ø22; Ø28; Ø32; Ø40; Ø50)	Output shaft diameter (Ø18; Ø22; Ø28; Ø32; Ø40; Ø50)
7	减速器速比 (i = 5; 10; 15; 20; 25; 30; 40; 50; 60; 80; 100; 120; 160; 200)	Speed ratio of reducer (i = 5; 10; 15; 20; 25; 30; 40; 50; 60; 80; 100; 120; 160; 200)

性能参数表 PERFORMANCE PARAMETER

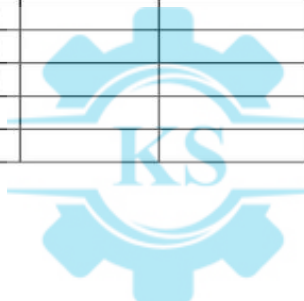
公称速比 Normal ratio		5	10	15	20	25	30	40	50	60	80	100	100	120	160	200	
0.1kW	输出轴 output shaft	Ø18							Ø22								
	实际速比 actual speed ratio	4.97	10.12	15.16	20.08	24.89	29.87	39.34	50.14	60.75	80.77	100.23	-	119.49	158.86	198.41	
	n2 (r/min)	282	138	92	70	56	47	36	28	23	17	14	-	12	9	7	
	M ₂ (Nm)	3.24	6.5	9.8	12.9	16.1	19.6	25.7	31.1	37.5	49.5	62.95	-	76.1	100.7	125.4	
0.2kW	输出轴 output shaft	Ø18					Ø22					Ø28					
	实际速比 actual speed ratio	4.97	10.12	15.16	20.08	24.89	30.21	40.55	50.32	60.75	80.77	100.23	104.08	120.88	161.07	196.43	
	n2 (r/min)	282	138	92	70	56	46	35	29	23	17	14	13	12	9	7	
	M ₂ (Nm)	6.5	12.6	19.1	26.3	32.6	38.9	50.4	63	75.6	100.8	103.9	125.4	150	200.4	250.7	
0.4kW	输出轴 output shaft	Ø22					Ø28					Ø32					
	实际速比 actual speed ratio	4.86	9.96	14.92	19.83	24.77	30	39.91	49.41	59.65	79.48	98.4	98.29	121.56	158.48	198.1	
	n2 (r/min)	288	141	94	71	57	47	35	28	23	18	14	14	12	9	7	
	M ₂ (Nm)	12.9	25	38.6	51.4	65.4	78.2	100.7	125.4	150	200.4	206.8	250.7	301.1	400.7	461.8	
0.75kW	输出轴 output shaft	Ø28					Ø32					Ø40					
	实际速比 actual speed ratio	5.04	10	14.95	19.92	24.29	30	40.74	50.38	59.54	79.39	98.18	98.9	122.08	155.56	194.44	
	n2 (r/min)	278	140	94	70	58	47	34	28	24	18	14	14	11	9	7	
	M ₂ (Nm)	24.6	48.2	72.9	97.5	122.1	145.7	187.5	235.7	282.9	376.1	387.9	439	527	703	764	
1.5kW	输出轴 output shaft	Ø32					Ø40					Ø50					
	实际速比 actual speed ratio	5	10.26	15	20	25	30	41.54	51.27	59.34	83.08	102.55	104.72	116.79	165.88	194.37	
	n2 (r/min)	280	136	93	70	56	47	34	27	24	17	14	13	12	8	7	
	M ₂ (Nm)	48.2	97.5	145.7	193.9	242.1	272	351	439	527	703	724	878	1060	1230	1230	
2.2kW	输出轴 output shaft	Ø40					Ø50										
	实际速比 actual speed ratio	5.14	10.29	14.69	20.57	25.71	30.8	38.82	50.73	59.27	77.45	100.76					
	n2 (r/min)	272	136	95	68	54	45	36	28	24	18	14					
	M ₂ (Nm)	67	133	200	266	332	399	515	644	773	1029	1230					

IEC 输入型减速器输出扭矩 OUTPUT TORQUE OF IEC INPUT REDUCER

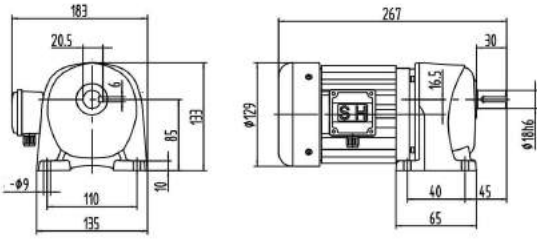
公称速比 Normal ratio		5	10	15	20	25	30	40	50	60	80	100	100	120	160	200
0.12kW	输出轴 output shaft	Ø18									Ø22					
	M ₂ (Nm)	3.9	7.8	11.7	15.4	19.3	23.5	30.9	37.3	45	59.4	75.5	-	91.3	120.9	150.4
0.18kW	输出轴 output shaft	Ø18						Ø22					Ø28			
	M ₂ (Nm)	5.9	11.4	17.2	23.6	29.3	35	45.3	56.7	68.1	90.7	93.5	112.8	135	180.3	225.6
0.37kW	输出轴 output shaft	Ø22					Ø28						Ø32			
	M ₂ (Nm)	11.9	23.1	35.7	47.6	60.5	72.3	93.2	116	138.8	185.3	191.3	231.9	278.5	370.7	427.2
0.75kW	输出轴 output shaft	Ø28					Ø32						Ø40			
	M ₂ (Nm)	24.6	48.2	72.9	97.5	122.1	145.7	187.5	235.7	282.9	376.1	387.9	439	527	703	764
1.5kW	输出轴 output shaft	Ø32					Ø40						Ø50			
	M ₂ (Nm)	48.2	97.5	145.7	193.9	242.1	272	351	439	527	703	724	878	1060	1230	1230
2.2kW	输出轴 output shaft	Ø40					Ø50									
	M ₂ (Nm)	67	133	200	266	332	399	515	644	773	1029	1230				

无级变速器配 IEC 输入型减速器性能参数 PERFORMANCE TABLE FOR STEPLESS SPEED RECUEER & IEC INPUT REDUCER

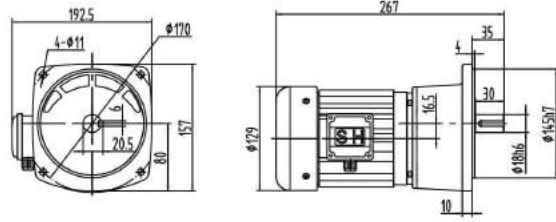
功率与转速 Motor & rev	型号 Model	i	n ₂ (r/min)	m ₂ (Nm)	功率与转速 Motor & rev	型号 Model	i	n ₂ (r/min)	m ₂ (Nm)		
0.18KW 4P n ₁ =1400r/min	UDL0.18-G3-18	5	34.4~176	7.5~36.1	0.37KW 4P n ₁ =1400r/min	UDL0.37-G3-28	5	34.4~176	7.5~36.1		
		10	16.9~86.3	15.3~73.6			10	16.9~86.3	15.3~73.6		
		15	11.3~57.7	23~110			15	11.3~57.7	23~110		
		20	8.5~43.6	30.4~146			20	8.5~43.6	30.4~146		
		25	6.8~35.2	37.7~181			25	6.8~35.2	37.7~181		
	UDL0.18-G3-22	30	5.5~28.4	46.8~224		UDL0.37-G3-32	30	5.5~28.4	46.8~224		
		40	4.3~22.1	59.9~288			40	4.3~22.1	59.9~288		
		50	3.5~17.8	74.4~357			50	3.5~17.8	74.4~357		
		60	2.7~14.1	64.2~452			60	2.7~14.1	64.2~452		
		80	2.2~11.1	120~575			UDL0.75-G3-28	80	2.2~11.1	120~575	
		100	1.7~8.9	149~714				100	1.7~8.9	149~714	
		100	1.6~8.4	158~757				UDL0.75-G3-32	100	1.6~8.4	158~757
		120	1.4~7.2	183~877					120	1.4~7.2	183~877
	160	1~5.3	250~1199	160		1~5.3	250~1199				
200	0.9~4.5	298~1428	200	0.9~4.5	298~1428						
0.37KW 4P n ₁ =1400r/min	UDL0.37-G3-22	5	41.2~206	13.9~63			5	41.2~206	13.9~63		
		10	20.6~103	27.9~126			10	20.6~103	27.9~126		
		15	13.1~65.5	43.8~198			15	13.1~65.5	43.8~198		
		20	10.3~51.5	55.8~250			20	10.3~51.5	55.8~250		
		25	8.2~41.2	69.7~315			25	8.2~41.2	69.7~315		
	UDL0.37-G3-28	30	6.7~33.3	86.1~389		30	6.7~33.3	86.1~389			
		40	5.1~25.7	112~505		40	5.1~25.7	112~505			
		50	4.1~20.7	139~625		50	4.1~20.7	139~625			



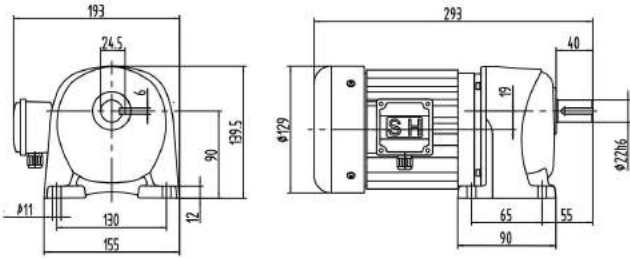
G3LM-18-5-50-T0.1



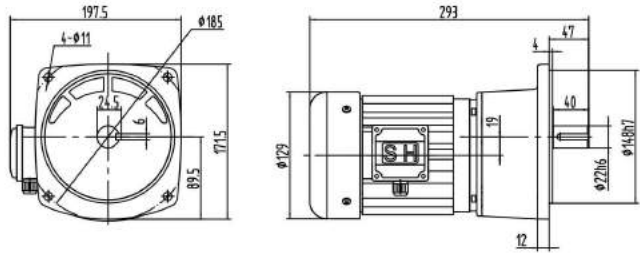
G3FM-18-5-50-T0.1



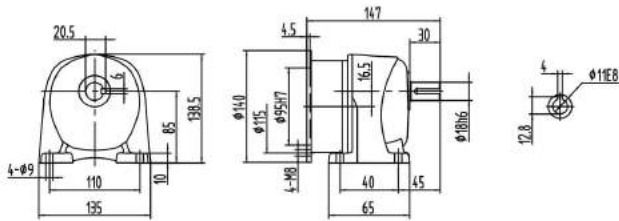
G3LM-22-60~200-T0.1



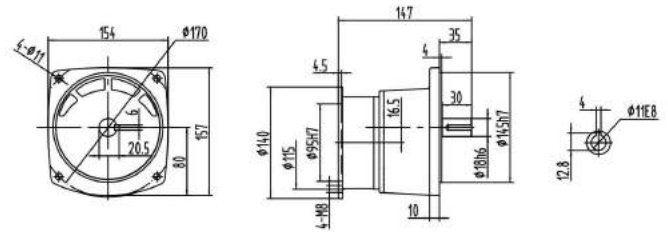
G3FM-22-60~200-T0.1



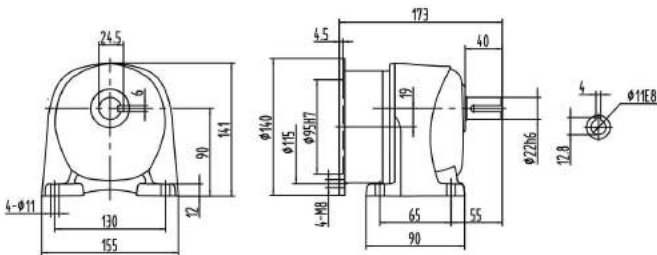
G3LS-18-5-50-T0.1



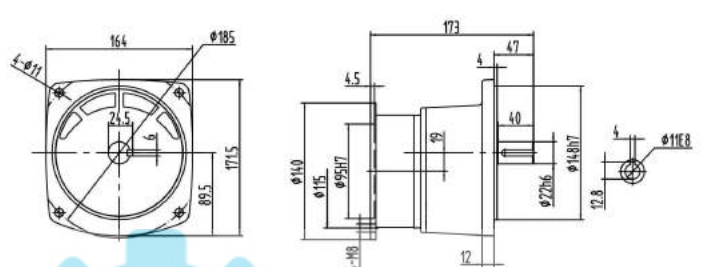
G3FS-18-5-50-T0.1



G3LS-22-60~200-T0.1

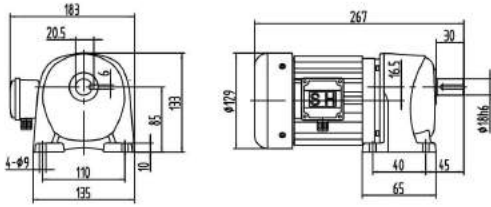


G3FS-22-60~200-T0.1

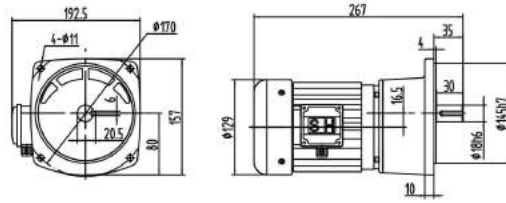


کیان صنعت
INDUSTRIES COMPANY

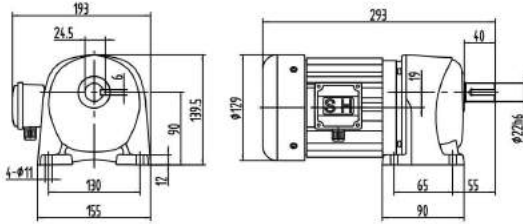
G3LM-18-5-25-T0.2



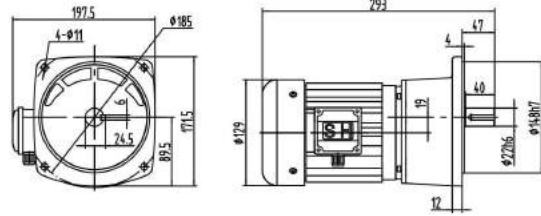
G3FM-18-5-25-T0.2



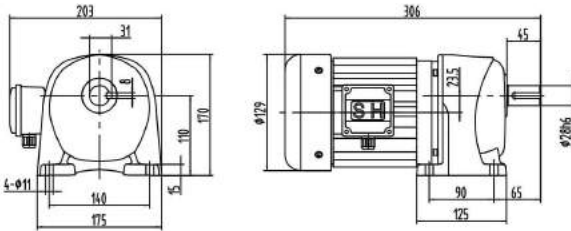
G3LM-22-30-100-T0.2



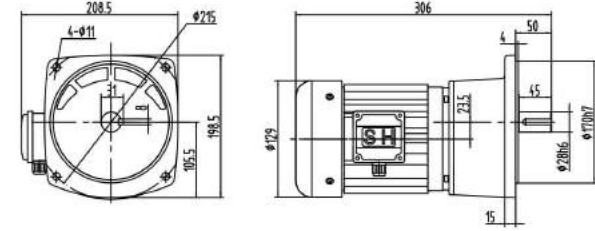
G3FM-22-30-100-T0.2



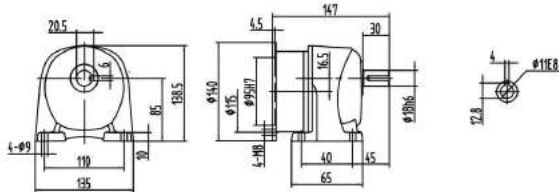
G3LM-28-100-200-T0.2



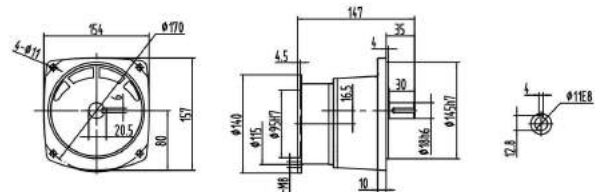
G3FM-28-100-200-T0.2



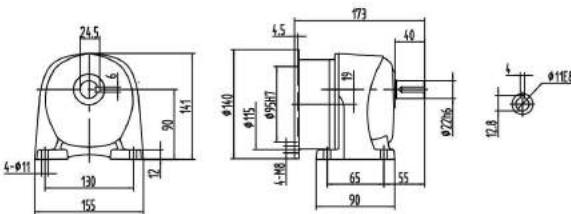
G3LS-18-5-25-T0.2



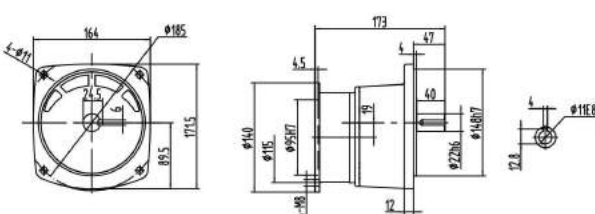
G3FS-18-5-25-T0.2



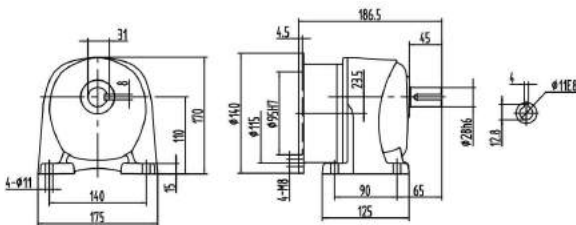
G3LS-22-30-100-T0.2



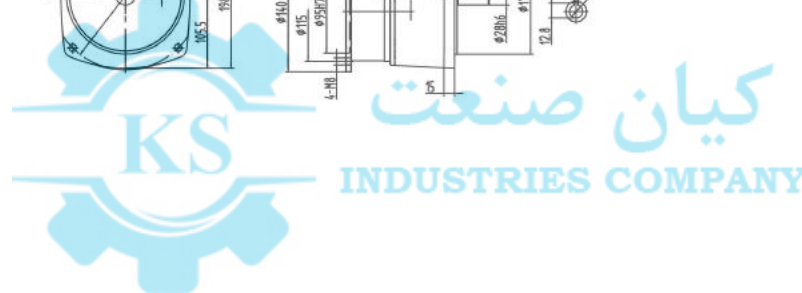
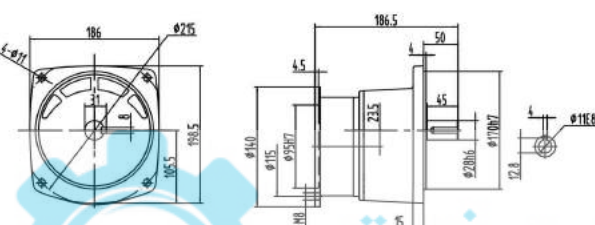
G3FS-22-30-100-T0.2



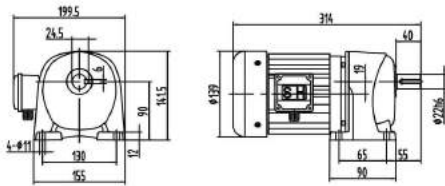
G3LS-28-100-200-T0.2



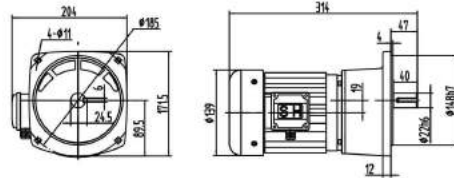
G3FS-28-100-200-T0.2



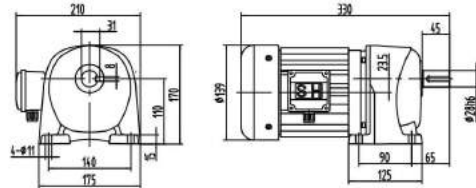
G3M-22-5-25-T0.4



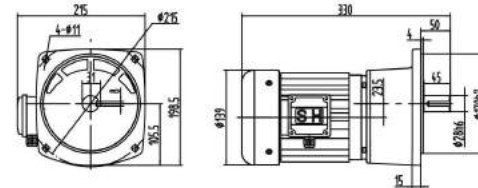
G3M-22-5-25-T0.4



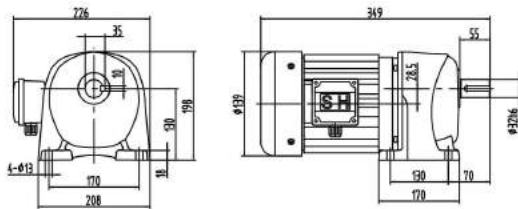
G3M-28-30-100-T0.4



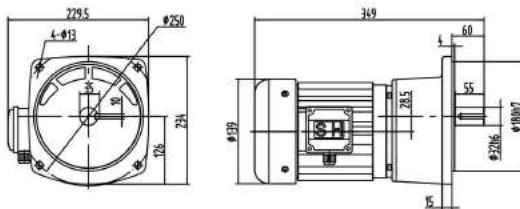
G3M-28-30-100-T0.4



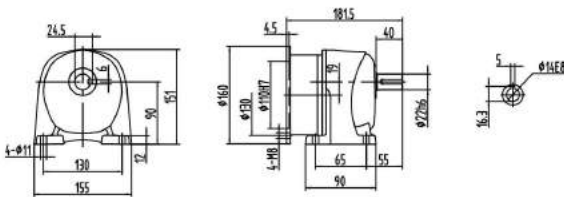
G3M-32-100-200-T0.4



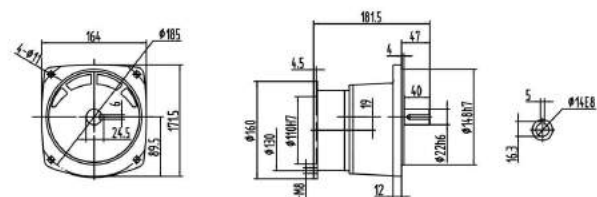
G3M-32-100-200-T0.4



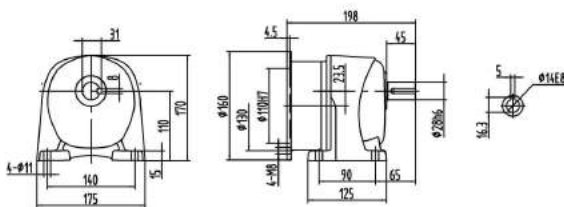
G3LS-22-5-25-T0.4



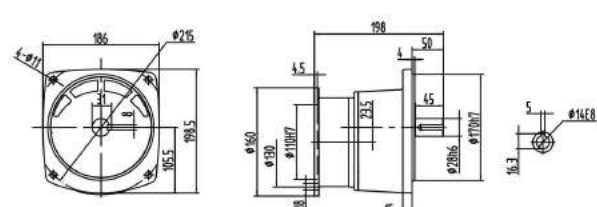
G3FS-22-5-25-T0.4



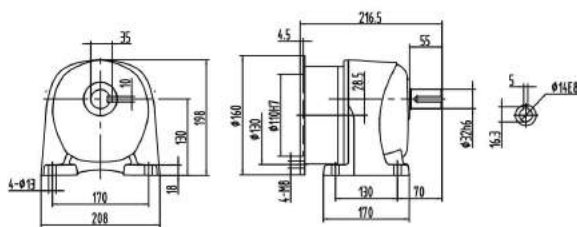
G3LS-28-30-100-T0.4



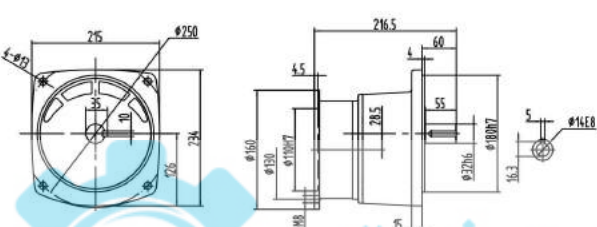
G3FS-28-30-100-T0.4



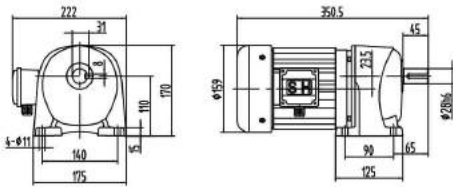
G3LS-32-100-200-T0.4



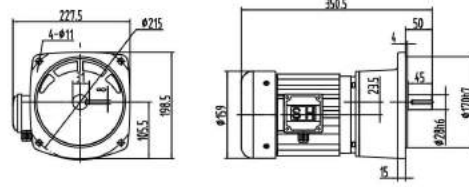
G3FS-32-100-200-T0.4



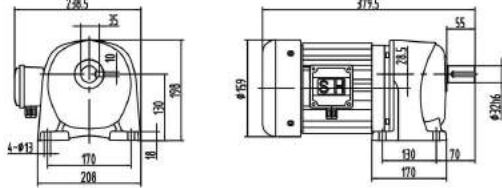
G3M-28-5-25-T0.75



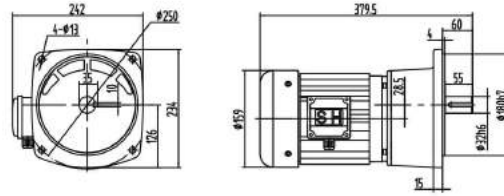
G3FM-28-5-25-T0.75



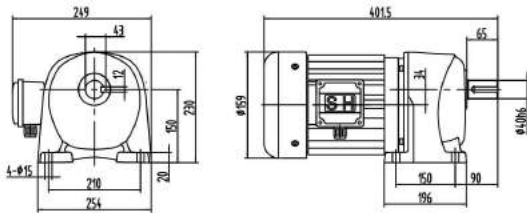
G3M-32-30-100-T0.75



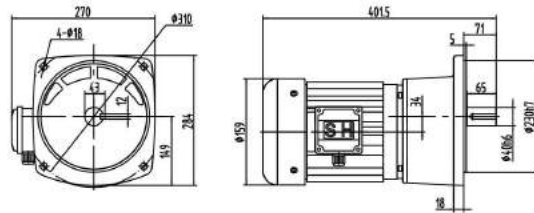
G3FM-32-30-100-T0.75



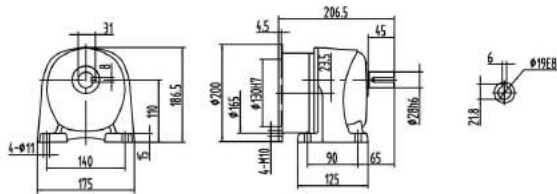
G3M-40-100-200-T0.75



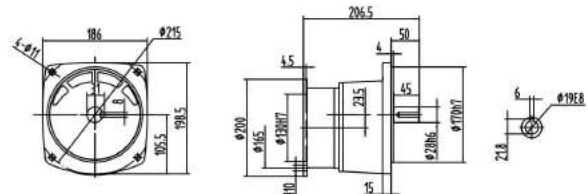
G3FM-40-100-200-T0.75



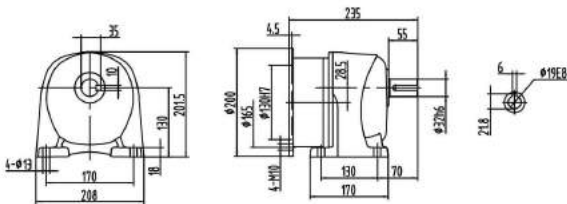
G3LS-28-5-25-T0.75



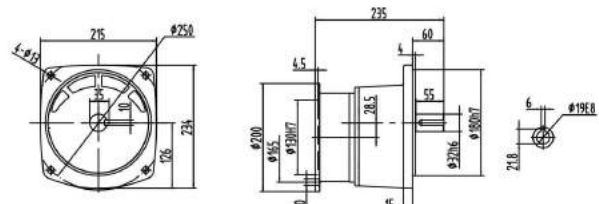
G3FS-28-5-25-T0.75



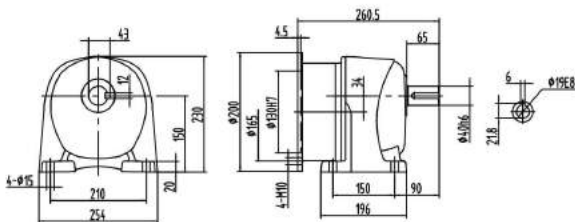
G3LS-32-30-100-T0.75



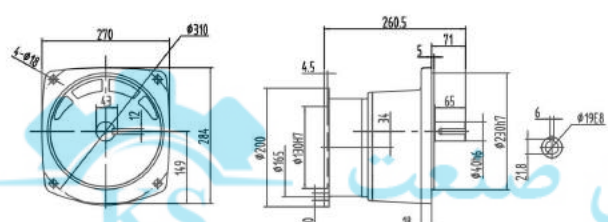
G3FS-32-30-100-T0.75



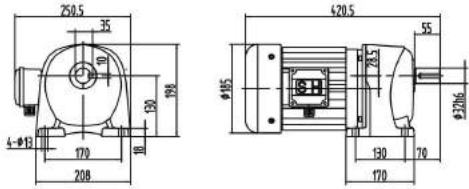
G3LS-40-100-200-T0.75



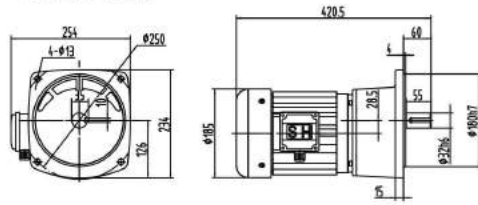
G3FS-40-100-200-T0.75



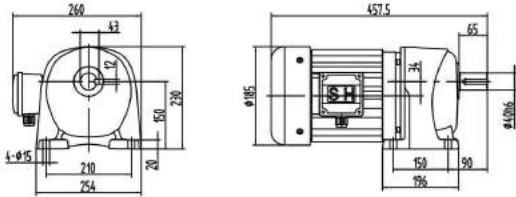
GLM-32-5-25-T15



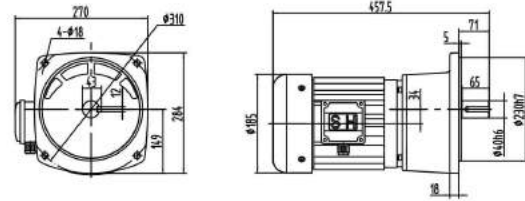
GLM-32-5-25-T15



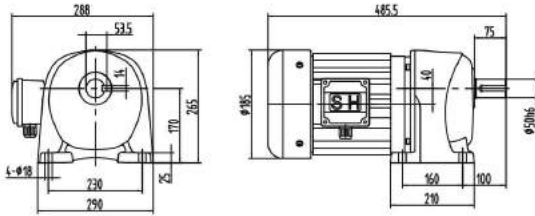
GLM-40-30-100-T15



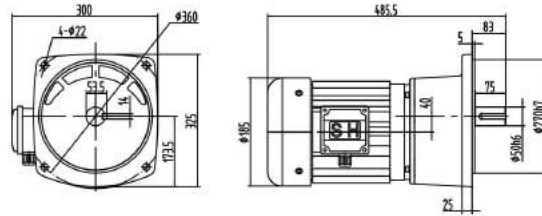
GLM-40-30-100-T15



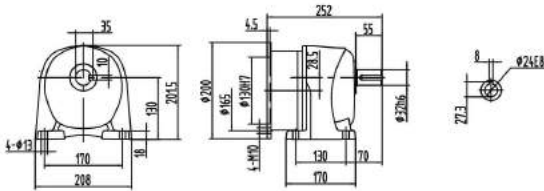
GLM-50-100-200-T15



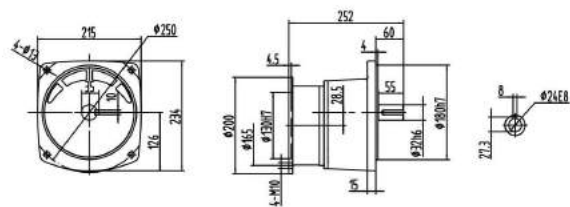
GLM-50-100-200-T15



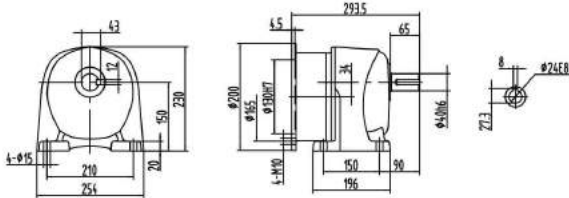
GLS-32-5-25-T15



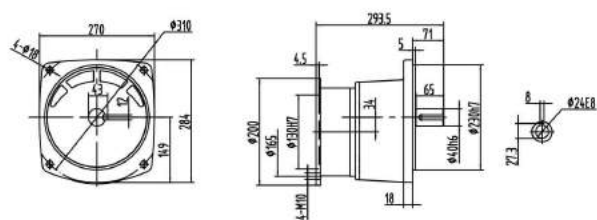
GLS-32-5-25-T15



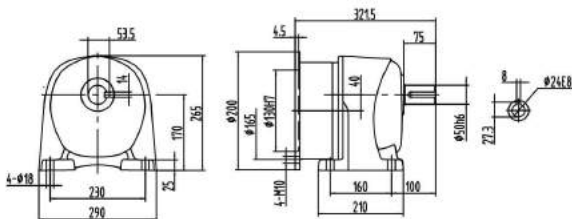
GLS-40-30-100-T15



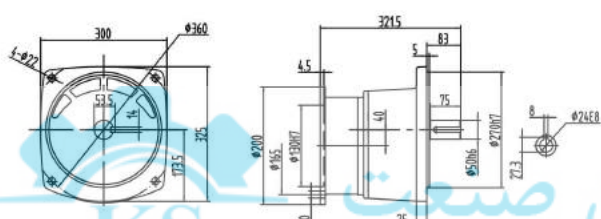
GLS-40-30-100-T15



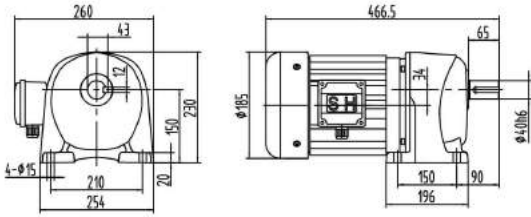
GLS-50-100-200-T15



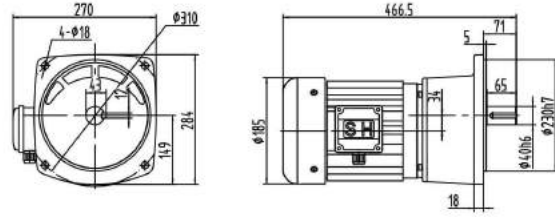
GLS-50-100-200-T15



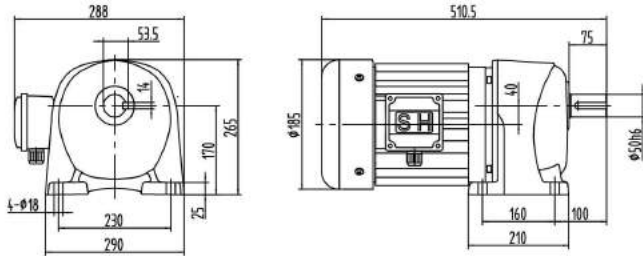
G3LM-40-5~25-T2.2



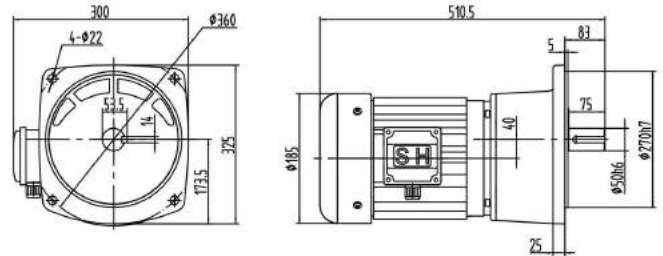
G3FM-40-5~25-T2.2



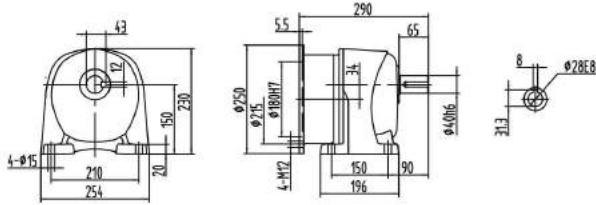
G3LM-50-30~100-T2.2



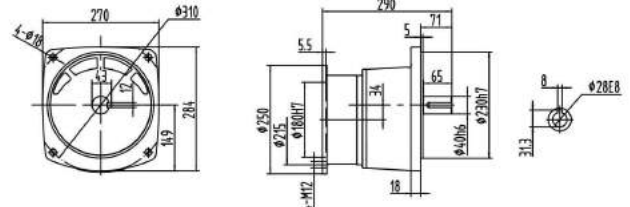
G3FM-50-30~100-T2.2



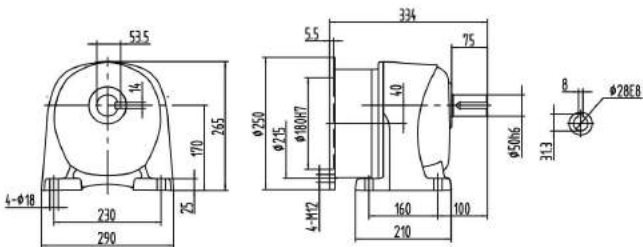
G3LS-40-5~25-T2.2



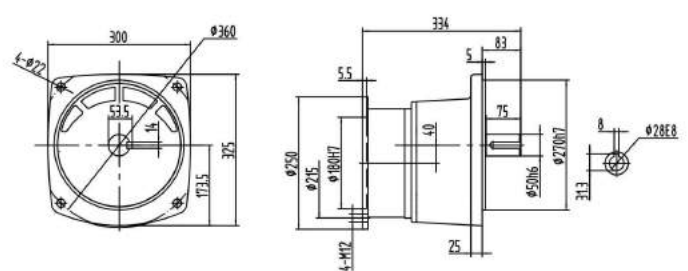
G3FS-40-5~25-T2.2



G3LS-50-30~100-T2.2



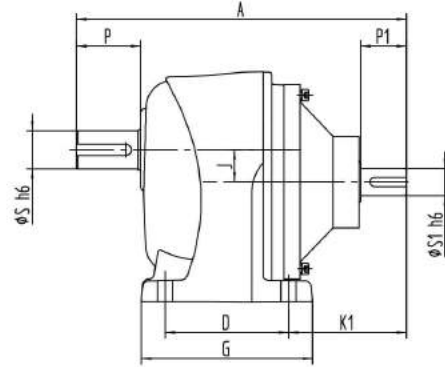
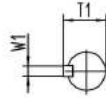
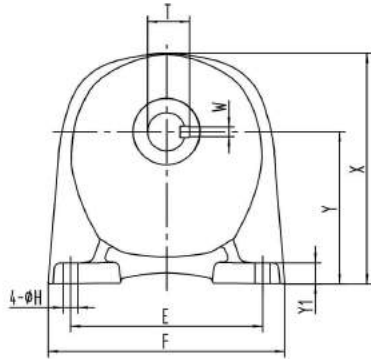
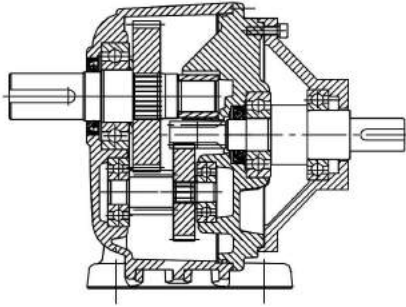
G3FS-50-30~100-T2.2



کیان صنعت
INDUSTRIES COMPANY

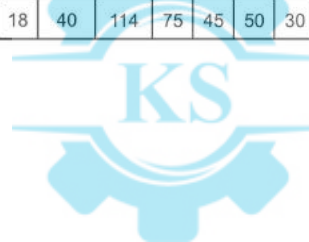
G3L 底脚式轴输入型减速器

SHAFT INPUT RUDUCER WITH FOOT



电机转速 1400 r / min
motor rotate speed 1400 r / min

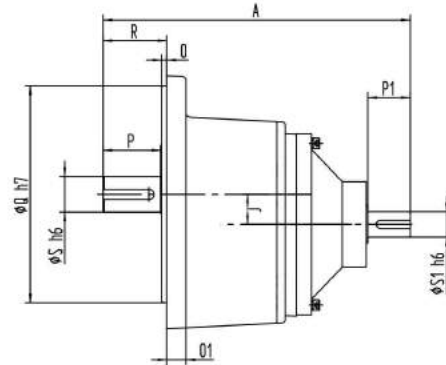
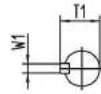
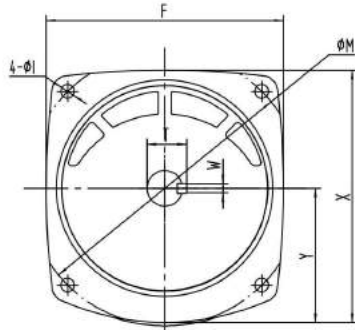
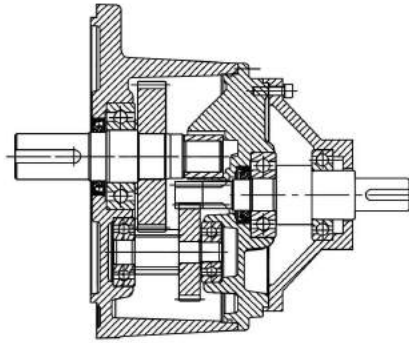
功率 power kW	输出轴 output shaft	减速比 ratio	主要外型及安装尺寸 primary outline and dimension-mount																		
			A	D	E	F	G	H	J	K ₁	P	P ₁	S	S ₁	T	T ₁	W	W ₁	X	Y	Y ₁
0.1	Ø18	5,10,15,20,25,30,40,50	181.5	40	110	135	65	9	16.5	96.5	30	25	18	12	20.5	13.5	6	4	131	85	10
	Ø22	60,80,100,120,160,200	207.5	65	130	154	90	11	19	87.5	40	25	22	12	24.5	13.5	6	4	139.5	90	12
0.2	Ø18	5,10,15,20,25	181.5	40	110	135	65	9	16.5	96.5	30	25	18	12	20.5	13.5	6	4	131	85	10
	Ø22	30,40,50,60,80,100	207.5	65	130	154	90	11	19	87.5	40	25	22	12	24.5	13.5	6	4	139.5	90	12
0.4	Ø28	100,120,160,200	220.5	90	140	175	125	11	23.5	65.5	45	25	28	12	31	13.5	8	4	170	110	15
	Ø22	5,10,15,20,25	219	65	130	154	90	11	19	99	40	30	22	15	24.5	17	6	5	139.5	90	12
	Ø32	30,40,50,60,80,100	235	90	140	175	125	11	23.5	80	45	30	28	15	31	17	8	5	17.	110	15
0.75	Ø32	100,120,160,200	254	130	170	208	170	13	28.5	54	55	30	32	15	35	17	10	5	198	130	18
	Ø28	5,10,15,20,25	244.5	90	140	175	125	11	23.5	89.5	45	35	28	20	31	22.5	8	6	170	110	15
	Ø32	30,40,50,60,80,100	273.5	130	170	208	170	13	28.5	73.5	55	35	32	20	35	22.5	10	6	198	130	18
1.5	Ø40	100,120,160,200	295.5	150	210	254	196	15	34	55.5	65	35	40	20	43	22.5	12	6	230	150	20
	Ø32	5,10,15,20,25	297	130	170	208	170	13	28.5	97	55	40	32	25	35	28	10	8	198	130	18
	Ø40	30,40,50,60,80,100	334	150	210	254	196	15	34	94	65	40	40	25	43	28	12	8	230	150	20
2.2	Ø50	100,120,160,200	362	160	230	290	210	18	40	102	75	40	50	25	53.5	28	14	8	265	170	25
	Ø40	5,10,15,20,25	330	150	210	254	196	15	34	90	65	45	40	30	43	33	12	8	230	150	20
	Ø50	30,40,50,60,80,100	374	160	230	290	210	18	40	114	75	45	50	30	53.5	33	14	8	265	170	25



کیان صنعت
INDUSTRIES COMPANY

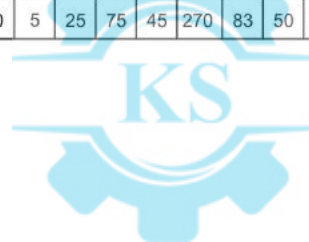
G3F 法兰式输入型减速器

SHAFT INPUT REDUCER WITH FLANGE



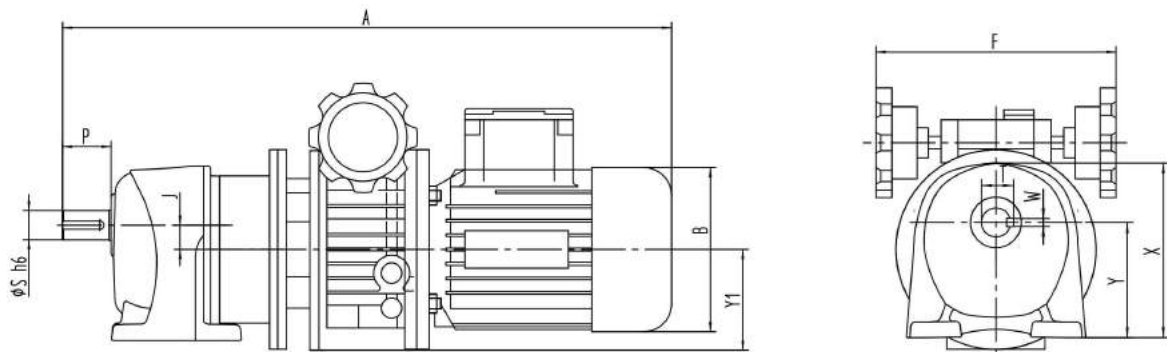
电机转速 1400 r / min
motor rotate speed 1400 r / min

功率 power kW	输出轴 output shaft	减速比 ratio	主要外型及安装尺寸 primary outline and dimension-mount																		
			A	F	I	J	M	O	O ₁	P	P ₁	Q	R	S	S ₁	T	T ₁	W	W ₁	X	Y
0.1	Ø18	5,10,15,20,25,30,40,50	181.5	154	11	16.5	170	4	10	30	25	145	35	18	12	20.5	13.5	6	4	157	80
	Ø22	60,80,100,120,160,200	207.5	164	11	19	185	4	12	40	25	148	47	22	12	24.5	13.5	6	4	171.5	89.5
0.2	Ø18	5,10,15,20,25	181.5	154	11	16.5	170	4	10	30	25	145	35	18	12	20.5	13.5	6	4	157	80
	Ø22	30,40,50,60,80,100	207.5	164	11	19	185	4	12	40	25	148	47	22	12	24.5	13.5	6	4	171.5	89.5
0.4	Ø28	100,120,160,200	220.5	186	11	23.5	215	4	15	45	25	170	50	28	12	31	13.5	8	4	198.5	105.5
	Ø22	5,10,15,20,25	219	164	11	19	185	4	12	40	30	148	47	22	15	24.5	17	6	5	171.5	89.5
	Ø32	30,40,50,60,80,100	235	186	11	23.5	215	4	15	55	30	180	60	32	15	35	17	10	5	234	126
0.75	Ø28	5,10,15,20,25	244.5	185	11	23.5	215	4	15	45	35	170	50	28	20	31	22.5	8	6	198.5	105.5
	Ø32	30,40,50,60,80,100	273.5	215	13	28.5	250	4	15	55	35	180	60	32	20	35	22.5	10	6	234	126
	Ø40	100,120,160,200	295.5	270	18	34	310	5	18	65	35	230	71	40	20	43	22.5	12	6	284	149
1.5	Ø32	5,10,15,20,25	297	215	13	28.5	250	4	15	55	40	180	60	32	25	35	28	10	8	234	126
	Ø40	30,40,50,60,80,100	334	270	18	34	310	5	18	65	40	230	71	40	25	43	28	12	8	284	149
	Ø50	100,120,160,200	362	300	22	40	360	5	25	75	40	270	83	50	25	53.5	28	14	8	323.5	173.5
2.2	Ø40	5,10,15,20,25	330	270	18	34	310	5	18	65	45	230	71	40	30	43	33	12	8	284	149
	Ø50	30,40,50,60,80,100	374	300	22	40	360	5	25	75	45	270	83	50	30	53.5	33	14	8	323.5	173.5



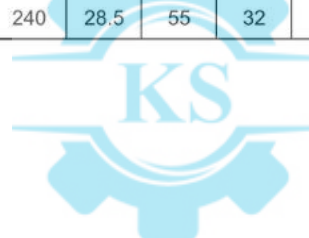
کیان صنعت
INDUSTRIES COMPANY

UDL-G3LS 无极变速器配底脚式IEC输入型减速器 COMBINATION OF SPEED VARIATOR AND IEC INPUT REDUCER WITH FOOT



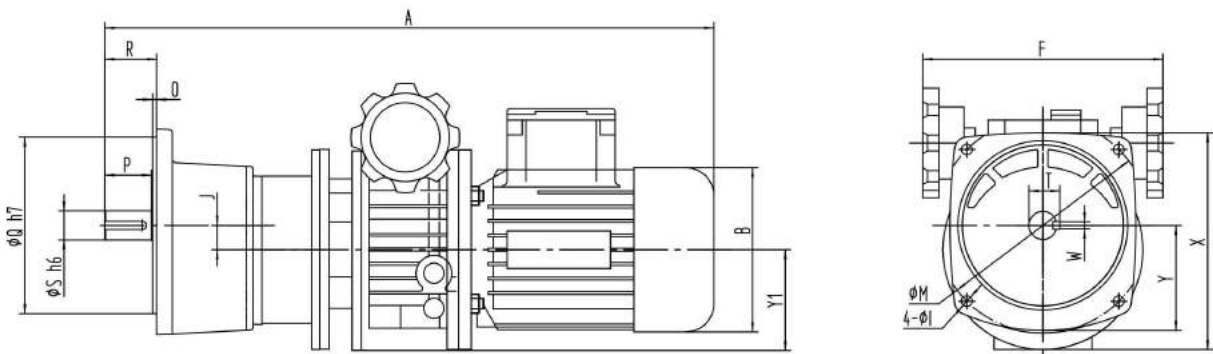
电机转速 1400 r / min
motor rotate speed 1400 r / min

功率 power kW	输出轴 output shaft	G3LS i_1	UDL i_2	主要外型及安装尺寸 primary outline and dimension-mount										
				A	B	F	J	P	S	T	W	X	Y	Y ₁
0.18	Ø18	5,10,15,20,25	1.6~8.2	459.5	120	220	16.5	30	18	20.5	6	148	85	70
	Ø22	30,40,50,60,80,100	1.4~7.0	485.5	120	220	19	40	22	24.5	6	148	90	70
	Ø28	100,120,160,200	1.4~7.0	499	120	220	23.5	45	28	31	8	148	110	70
0.37	Ø22	5,10,15,20,25	1.4~7.0	494	141	220	19	40	22	24.5	6	170	90	80
	Ø28	30,40,50,60,80,100	1.4~7.0	510.5	141	220	23.5	45	28	31	8	170	110	80
	Ø32	100,120,160,200	1.4~7.0	583.5	141	220	28.5	55	32	35	10	170	130	80
0.75	Ø28	5,10,15,20,25	1.4~7.0	649.5	160	240	23.5	45	28	31	8	207	110	100
	Ø32	30,40,50,60,80,100	1.4~7.0	678.5	160	240	28.5	55	32	35	10	207	130	100



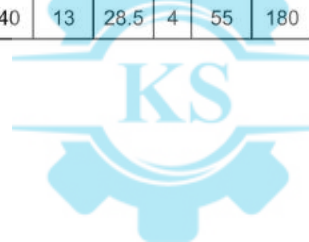
کیان صنعت
INDUSTRIES COMPANY

UDL-G3FS 无极变速器配法兰式IEC输入型减速器 COMBINATION OF SPEED VARIATOR AND IEC INPUT REDUCER WITH FLANGE



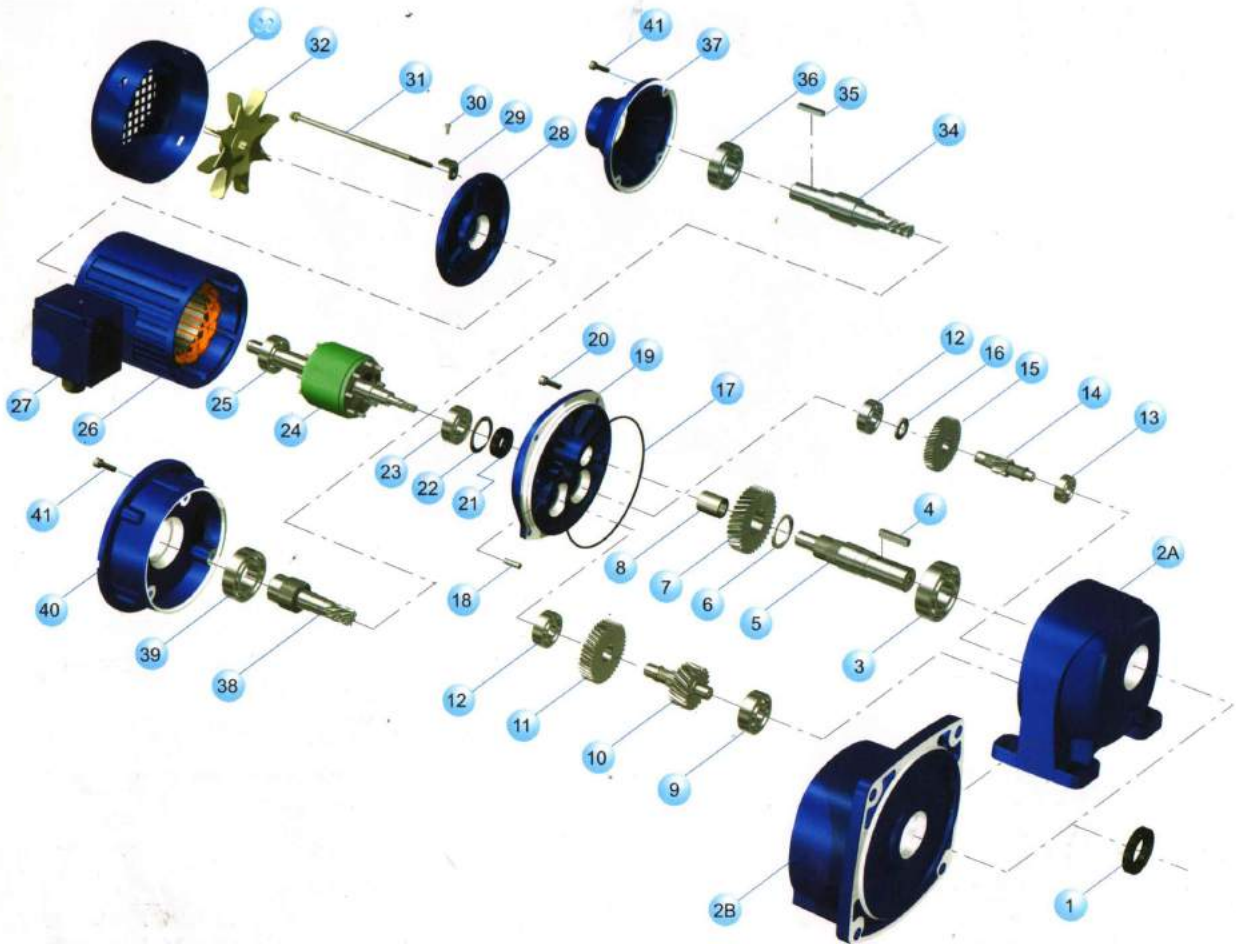
电机转速 1400 r / min
motor rotate speed 1400 r / min

功率 power kW	输出轴 output shaft	G3LS i_1	UDL i_2	主要外型及安装尺寸 primary outline and dimension-mount														
				A	B	F	I	J	O	P	Q	R	S	T	W	X	Y	Y1
0.18	Ø18	5,10,15,20,25	1.6~8.2	459.5	120	220	11	16.5	4	30	145	35	18	20.5	6	148	80	70
	Ø22	30,40,50,60,80,100	1.4~7.0	485.5	120	220	11	19	4	40	148	47	22	24.5	6	148	89.5	70
	Ø28	100,120,160,200	1.4~7.0	499	120	220	11	23.5	4	45	170	50	28	31	8	148	105.5	70
0.37	Ø22	5,10,15,20,25	1.4~7.0	494	141	220	11	19	4	40	148	47	22	24.5	6	170	89.5	80
	Ø28	30,40,50,60,80,100	1.4~7.0	510.5	141	220	11	23.5	4	45	170	50	28	31	8	170	105.5	80
	Ø32	100,120,160,200	1.4~7.0	583.5	141	220	13	28.5	4	55	180	60	32	35	10	170	126	80
0.75	Ø28	5,10,15,20,25	1.4~7.0	649.5	160	240	11	23.5	4	45	170	50	28	31	8	207	105.5	100
	Ø32	30,40,50,60,80,100	1.4~7.0	678.5	160	240	13	28.5	4	55	180	60	32	35	10	207	126	100

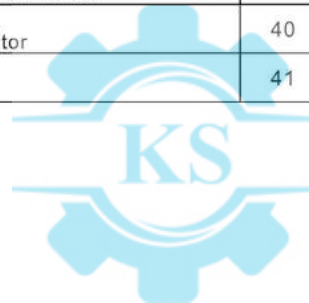


کیان صنعت
INDUSTRIES COMPANY

2级/3级爆炸图 2 STAGES /3 STAGE EXPLODED VIEW



序号	零件名称	序号	零件名称	序号	零件名称
1	输出轴油封 oil seal-output shaft	14	二级小齿轴 pinion-2 nd stage	28	电机后盖 rear cover-motor
2A	底脚式箱体 foot housing	15	一级大齿轮 gear-1 st stage	29	支架 bracket
2B	法兰式箱体 flange housing	16	垫片 spacer	30	风罩螺钉 screw-fan cover
3	输出轴轴承 bearing-output shaft	17	o型圈 o-ring	31	电机长螺栓 long bolt-motor
4	输出轴平键 key-output shaft	18	定位销 pin	32	风叶 cooling fan
5	输出轴 output shaft	19	电机法兰 motor flange	33	风罩 fan cover-motor
6	垫片 spacer	20	内六角螺钉 inner hexangon screw	34	轴输入齿轮轴 input shaft gear shaft
7	三级大齿轮 gear-3 rd stage	21	电机轴油封 oil seal-motor shaft	35	输入轴平键 key-input shaft
8	含油轴承 oiliness bearing	22	弹性垫片 spring washer	36	轴输入齿轮轴轴承 bearing-input shaft gear shaft
9	三级齿轮轴承 bearing-3 rd stage pinion	23	电机轴轴承 bearing-motor shaft	37	输入端盖 input cover
10	三级小齿轴 pinion-3 rd stage	24	转子 rotor	38	孔输入齿轮轴 input hole gear shaft
11	二级大齿轮 bearing-2 nd stage	25	电机轴轴承 bearing-motor shaft	39	孔输入齿轮轴轴承 bearing-input hole gear shaft
12	电机法兰轴承 bearing-motor flange	26	电机定子 motor stator	40	输入端法兰 flange-input
13	二级小齿轮轴承 bearing-2 nd stage pinion	27	铝接线盒 wire box	41	内六角螺钉 inner hexagon screw



کیان صنعت
INDUSTRIES COMPANY

制动型减速器特点和应用

制动型减速器是带有制动电机的减速器。电机制动装置由弹簧、摩擦片、制动板、整流器、线圈等构成，实现通电运转，断电即时制动。电机与制动器一体化设计，结构精巧；摩擦片采用进口高效非石棉材质，可耐高频使用，磨损率低且环保，使用次数可达100万次以上；整流器实现了一个开关就能控制电机启动和紧急停止，制动响应时间短；硬齿面斜齿轮减速器，延长使用寿命，适合用于制动频率高，紧急停止和启动的自动化场合。

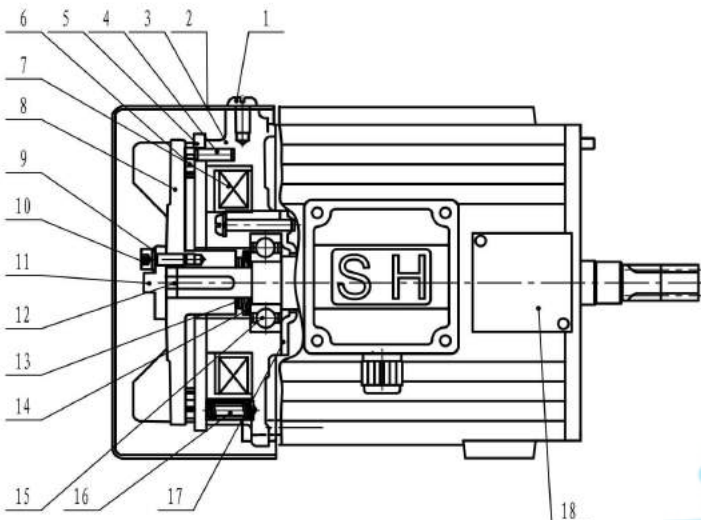
TRAIT OF THE BRAKING REDUCER AND ITS APPLICATION

Braking reducer is the reducer with brake motor. The motor brake apparatus consists of spring, lining, brake plate, rectifier and winding. It realizes running upon power-on condition while braking upon power-off condition. The integrated design of the motor and brake makes the configuration compact; The lining, which uses the imported and high-efficient non-asbestos material, is wearable during high-frequency usage, and low in wear rate, also environment-protected. It can be used more than 1,000,000 times; the rectifier actualizes the controlling motor starting and emergency stop by a switch; and it is short in response time. The hard facing helical gear reducer with a longevity usage is suitable to be applied on the automatic occasion such as high braking frequency, emergency stop and starting.

特性表 CHARACTERISTICS TABLE

功率 power (KW)	额定力矩 rated torque (Nm)	励磁电压 excitation pressure (V)	励磁功率 excitation power (W)	间隙调整工作量 clearance adjust workload (J)	总工作量 overall workload (J)	吸引时间 magnetize time (ms)	释放时间 release time (ms)	间隙 clearance	
								规定值 stated value (mm)	界限值 limited value (mm)
0.2	2	90	20	9×10^7	45×10^7	30	80	0.3	0.7
0.4	4	90	26	15×10^7	75×10^7	30	100	0.3	0.7
0.75	8	90	39.4	30×10^7	100×10^7	60	120	0.3	1
1.5	15	90	48	30×10^7	100×10^7	90	140	0.4	1
2.2	30	90	52.2	50×10^7	160×10^7	90	150	0.4	1

制动器结构图 BRAKE STRUCTURAL VIEW



1. 螺钉 screw
2. 罩壳 fan cover
3. 磁极组 pole group
4. 弹簧销 spring pin
5. 衔铁盘 gag bit plate
6. 摩擦片 friction piece
7. 线圈 winding
8. 制动板 brake board
9. 弹簧垫片 spring washer
10. 内六角螺钉 inner hex screw
11. 间隙调整螺钉 clearance adjust screw
12. 平键 key
13. 间隙垫片 clearance washer
14. 蝶形弹簧 papilionaceous spring
15. 轴承 bearing
16. 制动弹簧 brake spring
17. 轴承压扣 bearing press buckle
18. 电源装置 electrical source set

油量 QUANTITY OF LUBRICANT

输出轴 output shaft	Ø18	Ø22	Ø28	Ø32	Ø40	Ø50
油量 (g) quantity of lubricant (g)	140	200	400	600	900	1600

使用环境:

周围环境温度介于-10℃~40℃，周围环境湿度在85%以下，海拔1,000m以下，无腐蚀性、爆炸性气体或液体或多灰尘环境中，安装在建筑物内。

APPLICATION ENVIRONMENT:

Ambient temperature between -10℃~40℃, Ambient humidity below 85%RH, the altitude below 1,000m, no corrosive and explosive gas or liquid or dust, mounted in indoor.





SKM系列双曲面齿轮箱
SKM series hyperboloid geared speed reducer



PC系列齿轮减速机
PC series helical geared motor

G3齿轮箱IEC法兰
G3 helical gearbox with IEC flange



SRC直连齿轮箱
SRC helical motor gearbox



SRC三级齿轮箱
Three stage SRC helical gearbox



G3系列齿轮箱
G3 Series helical geared motor



SRC系列齿轮箱
SRC series helical gearbox



UDL配RV蜗轮齿轮箱
UDL with RV worm gearbox



PC配RV蜗轮齿轮箱
PC with RV worm gearbox

